



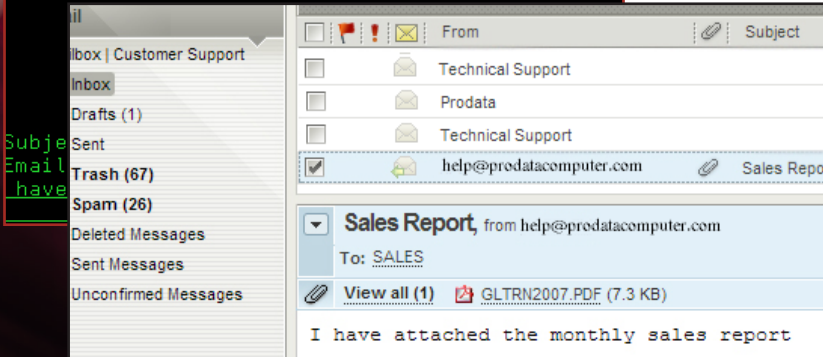
*Custom programming tools and
software for the System i*

What's New

```
Email Spool File (SPLF)
Output queue: PRT01 Name, *PRV
Library: *LIBL Name, *LIBL, *CURL
From Email Address: HELP@PRODATACOMPUTER.COM
Send Email to: SALES@PRODATACOMPUTER.COM
```

Splf2EML

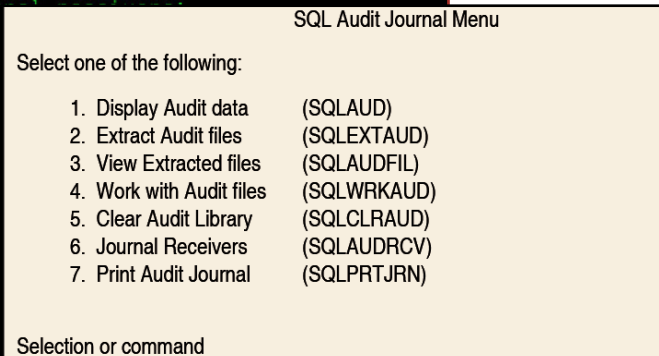
Convert Spool File to Email (Splf2EML) allows you to convert your simple spooled output to a PDF file and then automatically Email it to a list of up to 15 recipients with the email subject and text included. The command can be executed from a command line or it can be embedded into your interactive application for processing.



```
Extract SQL Audit Journal
Type choices, press Enter.
Journalized File:
File Name . . . . . *ALL
Library . . . . . *ALL
Member . . . . . *FIRST
Range of journal
Starting journal
Library
Ending journal
Library
Starting date
Starting date
Starting time
Ending date a
```

SQL Audit

SQL Audit allows users to track and monitor modifications made to any IBM i database using SQL. All data inserts, changes and/or deletes are tracked through journals which can be active only during the execution of each SQL statement or, if journaling is already activated, will use system journal files. SQL Audit also features an interface to display and report these changes for internal audits and compliance tracking.



"When I'm looking for programmer tools, I look to ProData. Over the years, they've provided me with what I need exactly when I need it!"

*Clark Brown,
Livingston, NJ*

ProData has been serving the midrange community for over 30 years. Geared towards programmer productivity tools, ProData has created innovative utilities to support development within all industries for over 30 years. DBU, database utility, is the flagship product with more than 20,000 installations worldwide. Additional utilities, such as RDB Connect and SQL/Pro, continue to grow and fill the needs of new and current customers with the evolution of technology and the Power Systems. ProData has been involved with IBM's Developers Roadmap, IBM's COMMON America Advisory Council, the IBM Advanced Business Partner program, and as a IBM Tools Partner.

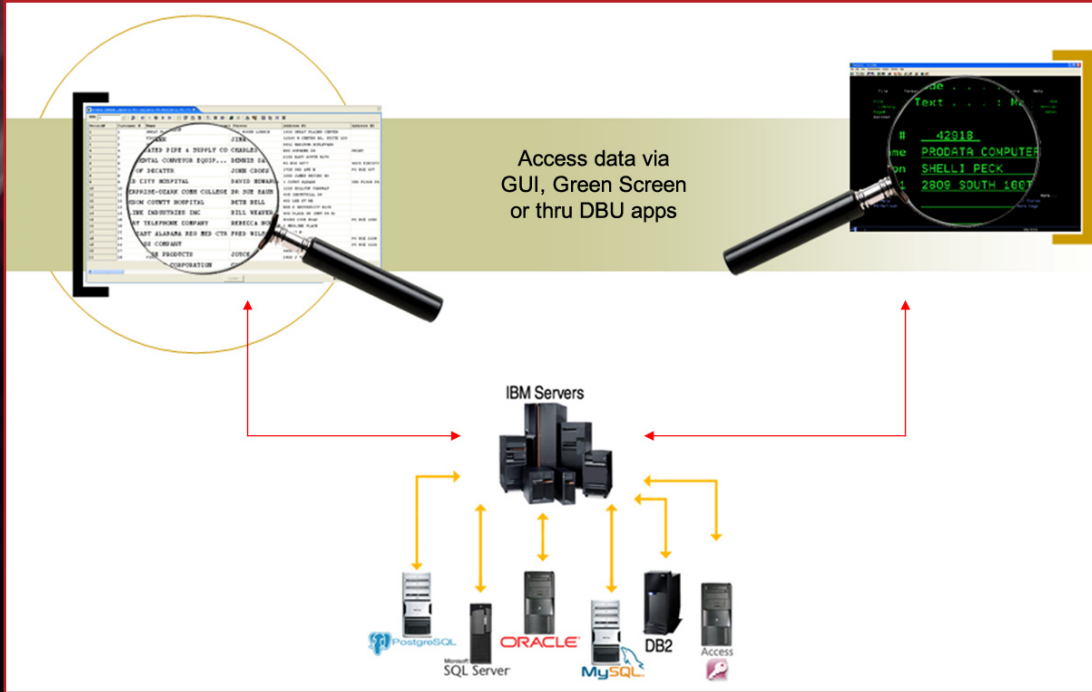


Free 30 Day Licenses
800.228.6318 **DoDBU.com**

DBU

Access ALL data on ALL systems NOW!

DBU Database Utility supports access to MySQL, Microsoft SQL Server, Oracle, DB2 database and others. Use **DBU** to analyze, access and secure data on all your servers and track the modifications made. Special JDE data handling also included.



One single tool, one interface across multiple platforms which allows secure access and audits over all your organization's data.

DBU provides all the features that are available with the traditional green screen solution.

"DBU has become an integral part of my toolkit. The ease and speed which I can access and update data is a God-send."

Chris Hillock
Gardena, CA

- » Allow & track database changes on all systems
- » Includes SQL facility which allows complex searches
- » Exports data to comma-delimited files & xml configs
- » Captures Data Areas & User Space modifications in audit logs and journals
- » Monitor file changes with audit trails
- » Reactivate deleted records
- » Includes advanced key field arrangement control
- » Exports SQL data definitions
- » Creates database maintenance applications
- » and much more!

The same great features that make **DBU** one of the top tools used within the IBM i world are all available. Quickly search and sort data, add-change-delete records and even create database applications. Tailor authority so only those that have access to the information can get at it. It's all intuitive and easy to use, with virtually no training necessary.

ProData

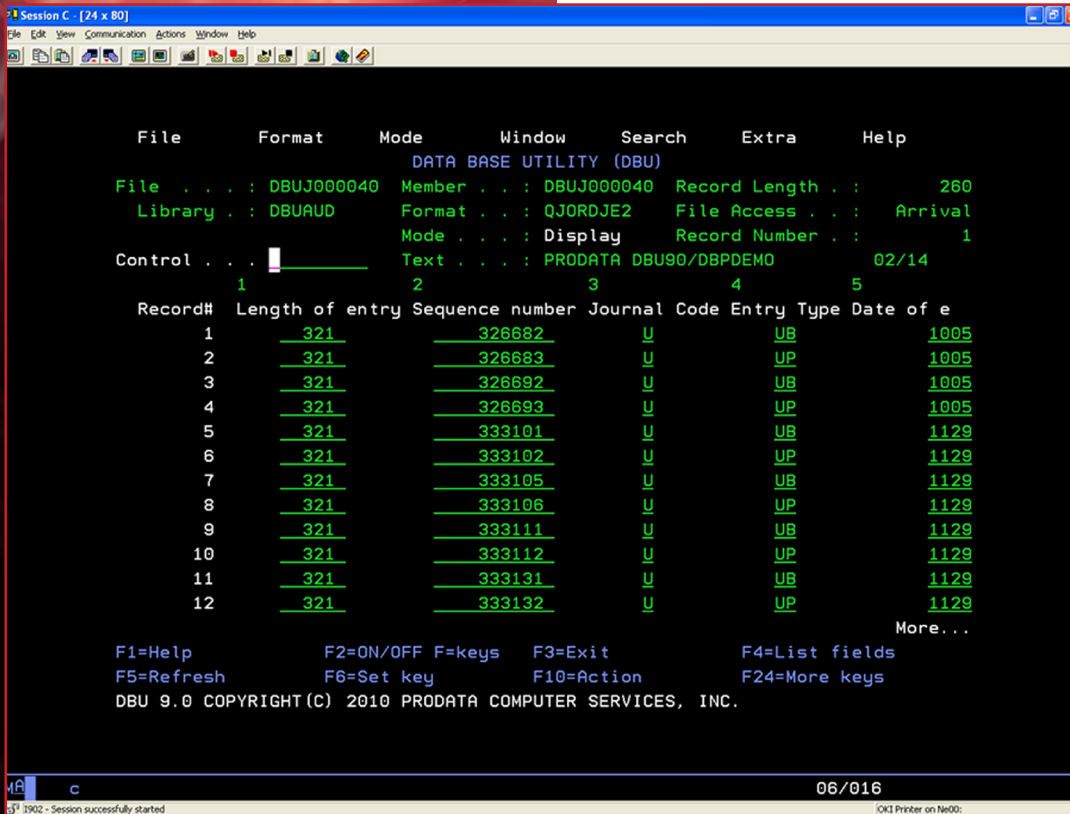
sales@prodatacomputer.com

Free 30 Day License
800.228.6318 **DoDBU.com**

DBU Audit

Plug-in to Compliance Today!

DBU Audit - just in time for all your auditing and regulatory needs! This plug-in works with DBU, our powerful database utility, to give administrators control over their databases by allowing them to track and monitor any modifications that have been made to any IBM i or remote database using DBU.



The screenshot shows the DBU Audit application window. The title bar reads 'Session C - [24 x 80]'. The menu bar includes File, Edit, View, Communication, Actions, Window, and Help. The main display area shows the following information:

```
DATA BASE UTILITY (DBU)
File . . . : DBUJ000040 Member . . . : DBUJ000040 Record Length . . : 260
Library . . : DBUAUD Format . . . : QJORDJE2 File Access . . . : Arrival
Control . . : Text . . . : PRODATA DBU90/DBPDEMO 02/14
1 2 3 4 5
Record# Length of entry Sequence number Journal Code Entry Type Date of e
1 321 326682 U UB 1005
2 321 326683 U UP 1005
3 321 326692 U UB 1005
4 321 326693 U UP 1005
5 321 333101 U UB 1129
6 321 333102 U UP 1129
7 321 333105 U UB 1129
8 321 333106 U UP 1129
9 321 333111 U UB 1129
10 321 333112 U UP 1129
11 321 333131 U UB 1129
12 321 333132 U UP 1129
More...
```

At the bottom, there are function key definitions: F1=Help, F2=ON/OFF, F=keys, F3=Exit, F4=List fields, F5=Refresh, F6=Set key, F10=Action, F24=More keys. The footer includes 'DBU 9.0 COPYRIGHT (C) 2010 PRODATA COMPUTER SERVICES, INC.' and a status bar with '06/016' and 'OK! Printer on Ne00:'.

- DBU Audit* enables administrators to:
- >> control audit logging
 - >> monitor access and/or changes to data
 - >> display the audit information
 - >> generate reports for SOX or other regulatory compliance mandates

"Just what we needed for SOX compliance."

*Jo Wellendorf
Elkhorn, NE*

DBU Audit works by journaling **all adds, changes, deletes, reactivation of deleted records and viewing of sensitive data** made by users through DBU to a standalone IBM journal. DBU Audit goes beyond the base DBU change logs by storing the data in journals rather than spooled files. This simplifies the ability to track and report on changes to your database files for regulatory compliance management or internal control requirements.

Combined with DBU Authority controls, which offer extensive security on all files and tailored functionality within DBU, *DBU Audit* features create the tracking and reporting mechanisms required for IT audits.



sales@prodatacomputer.com

Free 30 Day License
800.228.6318 **DoDBU.com**

RDB Connect

APIs to other platforms

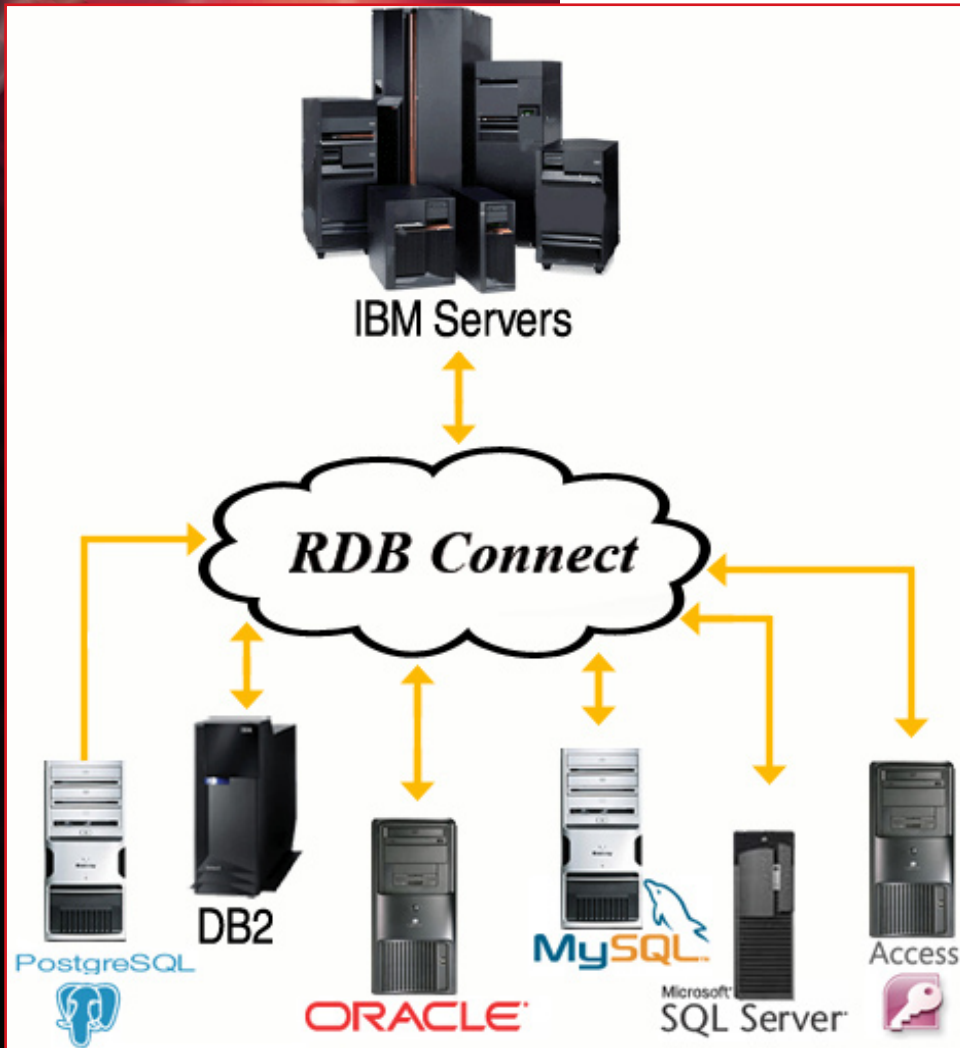
Easily access all your databases from an RPG program. *RDB Connect* provides easy and full SQL access to remote

databases from all IBM i high-level languages!

- » Provides callable APIs that interact with remote databases
- » Enables SQL statements from high-level language on IBM i
- » Import remote data to IBM i
- » Export IBM i data to remote systems

RDB Connect is a collection of commands and functions allowing record level access to remote data using RPG, COBOL or CL.

RDB Connect offers a procedural API for using SQL queries to access remote data. It requires an IP connection to the remote server that is running the database to access.



"I was amazed at how easy it was to integrate remote data into our applications using RDB Connect."

*Jonathan Williams,
Grand Rapids, MI*

ProData

sales@prodatacomputer.com

An implementation of *RDB Connect* will contain one or more applications, a core *RDB Connect* library, and one or more database drivers. The core library acts as an interpreter between the applications and the database drivers.

RDB Connect is used in our current DBU product to allow DBU users to access their remote data via the IBM i's DBU interface....it's proven!

Free 30 Day License

800.228.6318

DoDBU.com

RDR

RDR Retrieve Deleted Records

Have you ever had that sinking feeling that occurs when the wrong records are deleted? If so, you realize how important

RDR is for you. It is the cheapest insurance you can buy. Just don't wait until you have an emergency to get it!

RDR utility will:

- » retrieve all deleted records from any member of a physical file
- » retrieve all deleted records within a RRN range
- » display the number or deleted records in the file
- » place retrieved records in a second file designated
- » optionally attach RRN, automatically show the retrieved records in DBU Database Utility

Retrieve Deleted Records (RDR)

Type choices, press Enter.

File Name:	<u>DPDEMO</u>	Name
Library Name:	<u>*LIBL</u>	Name, *LIBL
Member Name:	<u>*FIRST</u>	Name, *First
From Record:	<u>1</u>	1 to 999999999
To Record:	<u>999999999</u>	1 to 999999999
Output File Name:	<u>RDRDLTS</u>	Name
Output Library Name:	<u>QTEMP</u>	Name
Output Member Name:	<u>RDRDLTS</u>	Name, *OUTFILE
Include Relative Record #: . . .	<u>*YES</u>	*YES, *NO

F1=Help F3=Exit

The input file is not changed in any way. The deleted records are put in a file of your choice, and then may be copied back into the original file. If all deleted records are not wanted, use the From and To Record to select the particular record(s).

The **RDR** command is easy to use. Just key in **RDR** and prompt. Fill in the parameters needed and <enter>. **RDR** will then create a file of the deleted record(s).

Two methods can then be used to retrieve the record(s).

1) The desired deleted records can be copied back into the original file. Use CPYF (with *DROP in Record format field mapping, if RRNs were requested) to copy the appropriate records back into the original file. In this case the retrieved records are placed at the end of the file.

2) Once the deleted records to be restored have been identified, use the RDR function within DBU to reactivate the record(s) in place, in the original file.

"With RDR, I can reactivate records in fifteen minutes that would previously have taken half a day to restore from tape!"

*William Rose,
Philadelphia, PA*



sales@prodatacomputer.com

Free 30 Day License

800.228.6318

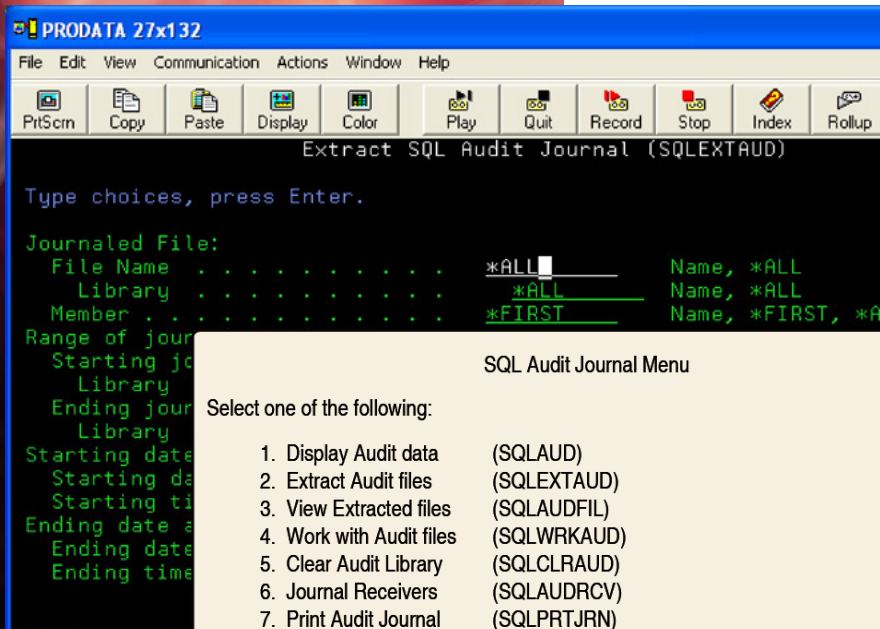
DoDBU.com

SQL Audit

Let 'em run wild ... we've got your back!

Cover your developer's back and satisfy the demand for monitoring and controlling your SQL environment.

SQL Audit provides the tracking and reporting you need to identify any problems with the results of your programmer's database modifications made using SQL on the IBM i.



Monitor SQL usage with SQL Audit.

Track all data modifications made by ProData's SQL/Pro or IBM's SQL. Report who did what to any data and when it was done. All data changes are tracked thru journals which are only active during the execution of each SQL statement. The audit software journals all inserts, updates and deletes made by users using SQL on

the IBM i and features an interface to display and report these changes for internal audits or compliance reports.

SQL Audit does not require journaling of all files all of the time, SQL Audit automatically turns on and off the journaling function when needed. This simplifies the ability to track and report on changes to your database files for regulatory compliance management or internal control requirements.

Try SQL Audit with SQL/Pro or IBM's SQL for 30 days and see what it can do for you.

'SQL Audit allowed me the confidence to execute SQL statements and readily access the resulting modifications thru the audit software. It's a great tool to have on the IBM i.'

*Myrna Thorpe,
Milwaukee, WI*



sales@prodatacomputer.com

Free 30 Day License

800.228.6318

DoDBU.com

SQL / Pro

A superior alternative to IBM's SQL/400

Structured Query Language (SQL) is a powerful query language supported on virtually every computer. *SQL/Pro* brings the power of SQL to your IBM i AS/400 at a price you can afford!

09/04/94 ABC Company Customer Payments Summary Page 97

Customer Name
Address
DEL MAR COMPANY
5250 WEST 74TH STREET #12
MINNEAPOLIS MN 55439

Order Amount for DEL MAR COMPANY

BETTER SYSTEMS, INC
P O BOX 36678
ROCHESTER CA 90137

Order Amount for BETTER SYSTEMS, IN

MAR DEL, INC
1220 ROTH AVE
ALLENTOWN PA 18102

Order amount for MAR DEL, INC

YORKTOWN, INC
P O BOX 957
SYRACUSE NY 13201

Order Amount for YORKTOWN, INC

_____ \$384.75
===== \$2,019,943.78

SQL/PRO
Current Output Device: Display
Processing Mode . . . : Interactive

Type SQL statement, press Enter.

```
SELECT CUNAME, CUADR1, CUADR2, CUCITY, CUSTE, CUZIP  
FROM ORDERLIB/CUSTOMER  
WHERE CUSTE = 'CA'  
AND (CUCITY LIKE '%LOAS ANGELES%' OR CUCITY LIKE 'SAN DIEGO%')
```

F3=Exit F5=Refresh F6=Insert Line F9=Retrieve F10=Copy Line
F13=Services F14=Delete Line F15=Split Screen F17=Select files/fields

Users can work with a simple English-like language that provides the power to query, print and manipulate data. Information can be selected, organized and summarized in nearly any way you can imagine. You'll be able to direct your output to the display, printer or to a database file. Programmers will appreciate the power of the software to update files. *SQL/Pro* provides easy to use screens that allow you to access the power of SQL immediately with a multitude of functionality.

- » Interactive User Interface
- » Extensive Report Formatting
- » Security Management Capabilities
- » Saved Query Interface
- » and more!

SQL/Pro prompts users through the build of queries. Combined with field name prompting, building SQL statements is much less cryptic than OPNQRYP commands. Once the statement is entered it can be run interactively or in batch to the display, the printer or database file.

SQL/Pro's secret is the easy-to-use screens that provide immediate access to the power of SQL. Users can browse through the history to look for previous statements, retrieve, modify, rerun or purge at any time.

"To work without SQL/Pro would be like working with one hand tied behind my back. It is an essential part of providing users with solutions."

*Cathy Kautzer,
Fayetteville, AR*



sales@prodatacomputer.com

Free 30 Day License
800.228.6318 **DoDBU.com**

Utilities

CvtRPGIV

Templates and Instructional Book

Make things easier and learn something new... convert to RPGIV! Do it with our conversion tool and experience the power of RPGIV. Convert all RPGII and RPGIII source to RPG IV syntax and experience the flexibility of the language's newest capabilities. CvtRPGIV makes the move to RPGIV simple for AS/400 shops and picks up where IBM'S CVTRPGSRC leaves off, providing you these additional conversions:

- ◆ Converts defined calculation fields to the new D specification
- ◆ Operation code and new values to mixed case
- ◆ EQ, NE, GT, LT, GE and LE are converted to RPGIV operators
- ◆ Convert by generic* or *ALL source members for a given source
- ◆ Highlight comments in the source file

RPGIV Program Templates are included to aid in the learning process!

DBUnifier

Interactive database applications in minutes!

Eliminate your mundane tasks. Put them in the Hands of your power users! DBUnifier creates interactive applications for database information instantly.

Create:

- ◆ Selection Lists (f4 List Processes)
- ◆ Subfile Processes
- ◆ File Maintenance Applications with field level validations

Use DBUnifier to view and maintain information from database files. To create a DBUnifier application, follow a sequence of displays that guide you through the process of defining and saving an application. In minutes the definition is complete and users can execute your database application!

1. DBU Your File
2. Define Your Initial Display
3. Design Your Maintenance Screen
4. Save Your Application RUN it!

CvtRPGIV Templates
File Maintenance Program
Inquiry Program
Multiple Screen Inquiry Program
Prompt/Validate/Submit Program
Simple Report Program
Display Object List
...and more!!

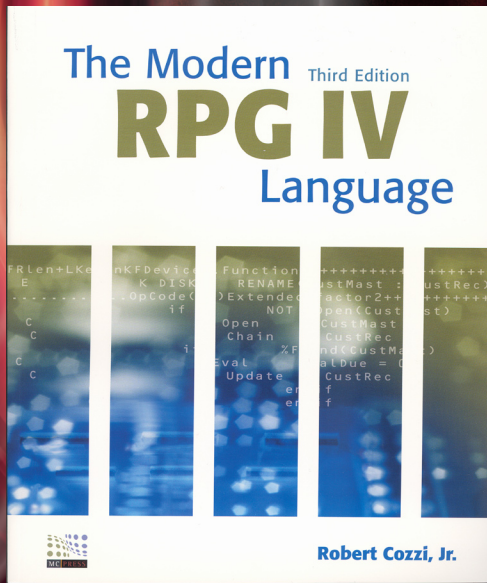
Step through this:



To achieve this



www.DoDBU.com 800.228.6318



CvtRPGIV

Templates and Instructional Book

Make things easier and learn something new, convert to RPGIV. Do it with our conversion tool and experience the power of RPGIV! Convert all RPGII and RPGIII source to RPG IV syntax and experience the flexibility of the language's newest capabilities.

With each new release of OS/400, IBM adds more features to RPG IV, making it more important for companies to migrate to RPGIV. Those shops that continue to dabble with old versions of the language will get left way behind on the significant improvements and may face future compatibility issues. CvtRPGIV makes the move to RPGIV simple for AS/400 shops and picks up where IBM'S CVTRPGSRC leaves off, providing you these additional conversions:

- » Converts defined calculation fields to the new D specification
- » ADD, Z-ADD, SUB, Z-SUB, MULT, and DIV are converted to EVAL statements
- » Operation code and new values to mixed case
- » EQ, NE, GT, LT, GE and LE are converted to the RPGIV operators
- » Convert by generic* or *ALL source members for a given source file
- » Highlight comments in the source file

CvtRPGIV is a conversion tool only. No attempt is made to correct or change program logic or deficiencies. Only operations that can be safely converted, will be converted. The operation of CvtRPGIV is simple. On a command line, key in the command and prompt. Fill in the necessary parameters and <enter>. That's it! Now bring up your source member and admire your new RPGILE program.

RPGIV Program Templates are included to aid in the learning process! These templates are predefined models that you can either copy or use directly to create standard application programs. All programs have uniform interfaces and require little modification to functionality. These aid programmers at all levels to learn by example and produce sophisticated high level programs and create a basis from which standards are propagated and are easy to customize for all your systems.

The CvtRPGIV package also includes a MC Press LLC book, 'The Modern RPGIV language', authored by Bob Cozzi, a long-time expert on the iSeries AS/400 and RPG language. Use this as a reference to further enhance your RPGIV skill set. Modernize your applications and utilize templates that increase programmer productivity and give programmers at all levels the ability to learn by example and produce sophisticated high level programs in your shop. MOVE TO IT!

FREE Book with Purchase

CvtRPGIV Templates

File Maintenance Program

Inquiry Program

Multiple Screen Inquiry Program

Prompt/Validate/Submit Program

Simple Report Program

Simple Report Prompt/Submit Program

Perform OPNQRYF & Execute
Report Program

Report Prompt/Submit Program

Subfile Selection Program

Subfile Maintenance Work with
Subfile Process Program

Standard CL Program with Error Handling

Simple Pop-up Window

Display Record Lock Information

Program Status Data Structure

Copy Book

Display Object List

...and more!!

www.DoDBU.com

800.228.6318

sales@prodatacomputer.com

Free 30 Day Productivity Kits

What WRKQRY
is for reports,
DBUnifier is
for interactive
applications!



DBUnifier

Interactive database applications in minutes!

Eliminate your mundane tasks. Put them in the Hands of your power users! *DBUnifier* creates interactive applications for DB2/400 database information instantly.

Step through this:

```
DBUnifier (version 4.2)
Define DBUnifier Application          9/14/04
                                      15:43:34
Application . . . . . EXAMPLE         Option . . . . . CHANGE
Library . . . . . DBUNIFIER.

Type options, press Enter. Press F21 to select all.
1=Select

Opt  DBUnifier Application Options
  > Specify file selections
  > Define result fields
  > Define initial multi-record display
  > Specify screen options
  > Define screen field details
  > Define exit programs

F1=Help  F3=Exit  F5=Refresh  F10=Command Entry
Bottom
F24=More Keys

(C)Copyright ProData Computer Services, Inc. 2004
```

Create:

- » Selection Lists (f4 List Processes)
- » Subfile Processes
- » Inquiry Applications
- » File Maintenance Applications with field level validations

Use *DBUnifier* to view and maintain information from database files. To create a DBUnifier application, follow a sequence of displays that guide you through the process of defining and saving an application. In minutes the definition is complete and users can execute your database application!

To achieve this:

```
DBUnifier (version 4.2)
A DBUnifier Application Example      9/14/04
                                      16:04:05
Type options, press Enter.

Delete Flag . . . . . 
substr(name,1,10)  GEORGE
Record Key . . . . . 1
Name . . . . . GEORGE WASHINGTON
Alternate Name . . . . . WASHINGTON
Title . . . . . PRESIDENT
Company Name . . . . . MOUNT VERNON ESTATE
Address #1 . . . . .
Address #2 . . . . .
Address #3 . . . . .
City . . . . . MOUNT VERNON
State/Province . . . . . VA
Country . . . . . UNITED STATES
Postal Code . . . . . 22121
Phone Number . . . . . 703.780.2000

F1=Help  F3=Exit  F5=Refresh  F12=Cancel
More...

Copyright ProData Computer Services, Inc. 2004
```

1 - DBU Your File

Or you can select the file directly from *DBUnifier*

2 - Define Your Initial Display

Choose the specific fields you would like listed for your multiple record display (subfile).

3 - Design Your Maintenance Screen

Set your initial values, control screen layout, position fields, define field validation rules with relational operators, ranges, list of values or database validity checks.

4 - Save Your Application

Select optional exit programs for pre or post processing. Select modes such as inquiry, update or add/change. Incorporate into your legacy applications through calls, commands and/or menu options.

5 - RUN It!

Interactive database applications in minutes!



ProTools

Popular Tools and the Source Code INCLUDED!

File Based Menu System Utilize a file based menu system that allows the creation and maintenance of menus. Access to menu options can be authorized by User or Group profile.

Send E-Mail Message Send Internet mail messages from green screens. This AS/400 command can be executed from a command line, submitted to batch or executed from a batch or interactive program.

Zip/UnZip Files Zip and UnZip Stream Files. Zip/Compress files which then can be opened using PKZIP or JAR. UnZip or uncompress files that have been zipped or compressed using PKZIP or JAR.

Program File Cross Reference Do you need to know all the programs that are using a certain file. This utility shows them all.

Interrupt Job Uses the system request function to break into interactive jobs and display the command entry screen.

Nest CL Nest CL conditional statements.

Work With Group Jobs Start/Stop and Manage Group Jobs. No longer do you have to log on to multiple devices and sessions. Use WRKGRPJOB and start, end and manage Group Jobs with this easy to use utility.

Calculator Use our Calculator/Adding Machine with an editable tape. Performs adding machine type functions and recalculates the results when you EDIT the TAPE. Print your results for a permanent copy.

Scan Message File Scan and filter messages containing specified phrases, words or partial words.

Execute CL Source Member Execute a CL source member without compilation. Create CL source members of multiple commands and job streams you desire to run, Then execute EXECLSRC to run them.

Sort File Quickly sort a file. Prompting allows you to select the fields and the order for the resulting sort.

Create MI Program Compiles source members written in MI.

Display Member Display source members on machines without IBM's Application Development Toolkit.

Save/Restore Library List Save your Library List into memory. Then restore the saved library list at any later point.

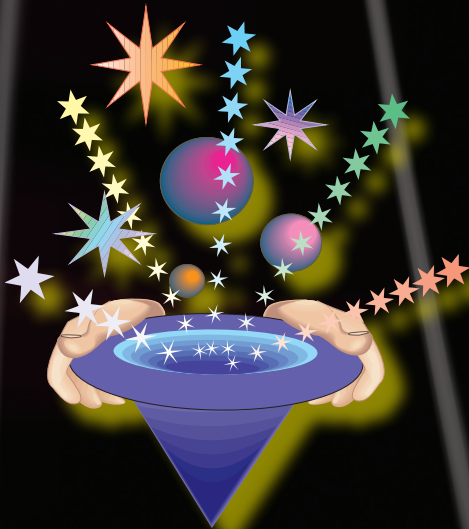
Save/Restore Local Data Area Save your Local Data Area into memory. Then restore the saved Local Data Area at any later point.

Send User Break Message Issue the USRBRKMSG command and a break message will be sent to each device the user profile is signed on to.

View PC Document View PC text documents in a folder on your AS/400 green screen.

User Index Service Program Create, delete and maintain User Indexes with ease. Use our service program to process user indexes. An example program is provided to show you how to use the USRIDX service program.

We've had so many requests. Here, for the first time, is an opportunity to acquire some of the tools that we have developed over the years, and the source code is included!



Share the Magic

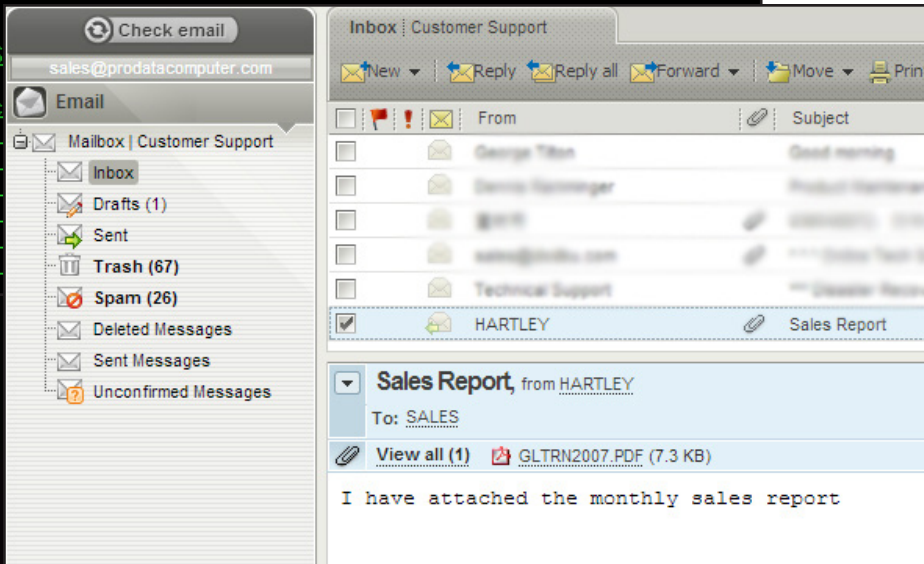
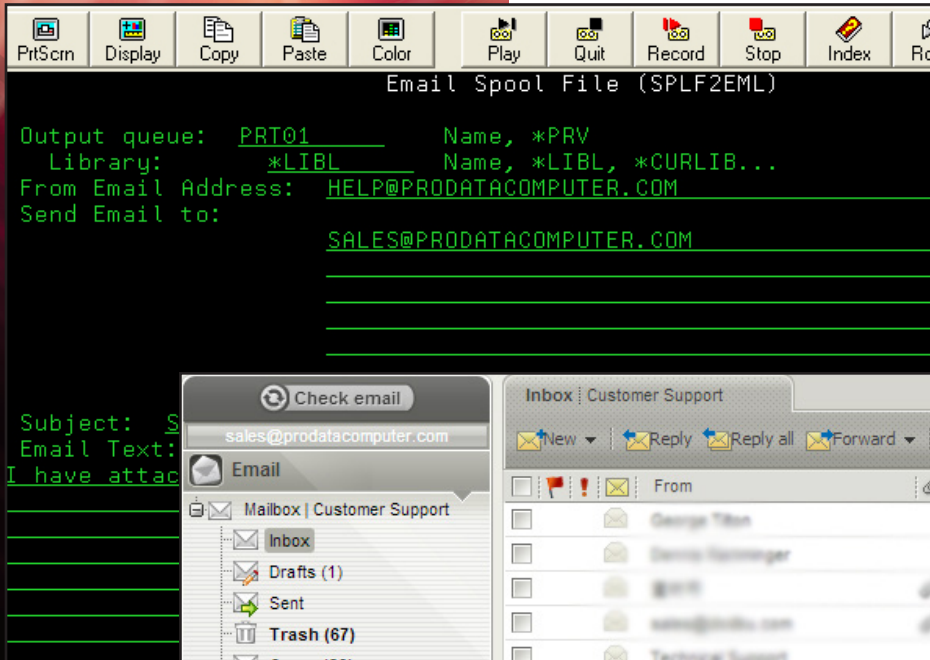
800.228.6318

www.DoDBU.com



SPLF2EML

Convert Spool File To Email



Convert Spool File to Email (Splf2EML) allows you to convert your simple spooled output to a PDF file and then automatically Email it to a list of up to 15 recipients.

The user can pick one spool file or multiple spool files to be merged into one PDF document.

The command supports *PRV on all command parms. If *PRV is used, the

program will prompt

the user with the previous options allowing the user to make changes.

**NOTE: Email must be configured on iSeries.*

www.DoDBU.com

800.228.6318

sales@prodatacomputer.com



Splf2HTML

Convert Spool File To HTML Document

```

Convert Spool File To HTML (SPLF2HTML)

Type choices, press Enter.

Spooled File . . . . . qsysrpt      Character value
Job name or * for current job . . . sample.rpt  Name, *, *CURRENT, *
User name . . . . . webster       Name, *CURRENT, *ALL
Job number . . . . . 073917       000000-999999, *ALL
Status of jobs . . . . . *ACTIVE   *ALL, *ACTIVE, *JOBQ

Spool To HTML File . . . . . QSYSRPT      Display Spooled File
Control . . . . .
Stream Font . . . . .
Font . . . . .

Key Name      Alternate Name      eMail Address
-----
1 GEORGE WASHINGTON      WASHINGTON           WASHINGTON@HOTMAIL.COM
2 JOHN ADAMS             ADAMS JOHN          ADAMS@HOTMAIL.COM
3 THOMAS JEFFERSON      JEFFERSON THOMAS   JEFFERSON@HOTMAIL.COM
4 JAMES MADISON         MADISON JAMES      MADISON@HOTMAIL.COM
5 JAMES MONROE          MONROE JAMES       MONROE@HOTMAIL.COM
6 JOHN QUINCY ADAMS     ADAMS JOHN QUINCY  JQADAMS@HOTMAIL.COM
7 ANDREW JACKSON       JACKSON ANDREW     JACKSON@HOTMAIL.COM
8 MARTIN VAN BUREN     VAN BUREN MARTIN   VANBUREN@HOTMAIL.COM
9 WILLIAM HENRY HARRISON HARRISON WILLIAM HENRY HARRISON@HOTMAIL.COM
10 JOHN TYLER           TYLER JOHN          TYLER@HOTMAIL.COM
11 JAMES POLK           POLK JAMES          POLK@HOTMAIL.COM
12 ZACHARY TAYLOR      TAYLOR ZACHARY     TAYLOR@HOTMAIL.COM

```

Convert Spool File to HTML Documents (Splf2HTML) allows you to convert your spooled output to an HTML stream file. The HTML document can then be emailed or viewed directly with a web browser. The command can be executed from a command line or it can be embedded into your application for batch processing.

Splf2HTML is one of a number of unique utilities ProData has to offer.

Geared towards programmer productivity tools, ProData's created innovative utilities to support development within industries for over 30 years. DBU, database utility, is the

Key Name	Alternate Name	eMail Address
1 GEORGE WASHINGTON	WASHINGTON	WASHINGTON@HOTMAIL.COM
2 JOHN ADAMS	ADAMS JOHN	ADAMS@HOTMAIL.COM
3 THOMAS JEFFERSON	JEFFERSON THOMAS	JEFFERSON@HOTMAIL.COM
4 JAMES MADISON	MADISON JAMES	MADISON@HOTMAIL.COM
5 JAMES MONROE	MONROE JAMES	MONROE@HOTMAIL.COM
6 JOHN QUINCY ADAMS	ADAMS JOHN QUINCY	JQADAMS@HOTMAIL.COM
7 ANDREW JACKSON	JACKSON ANDREW	JACKSON@HOTMAIL.COM
8 MARTIN VAN BUREN	VAN BUREN MARTIN	VANBUREN@HOTMAIL.COM
9 WILLIAM HENRY HARRISON	HARRISON WILLIAM HENRY	HARRISON@HOTMAIL.COM
10 JOHN TYLER	TYLER JOHN	TYLER@HOTMAIL.COM
11 JAMES POLK	POLK JAMES	POLK@HOTMAIL.COM
12 ZACHARY TAYLOR	TAYLOR ZACHARY	TAYLOR@HOTMAIL.COM

flagship product with more than 20,000 installations worldwide. Additional utilities, such as RDB Connect and SQL/Pro, continue to grow and fill the needs of new and current customers with the evolution of technology and the Power Systems. ProData's been involved with IBM's Developers Roadmap, COMMON America Advisory Council, the IBM Advanced Business Partner program, and as an IBM Tools Partner.



Splf2PDF

Convert Spool File To PDF Document

```

Convert Spool File To PDF (SPLF2PDF)

Type choices, press Enter.

Spooled File . . . . . QSYSPT      Character value
Job name or * for current job . *      Name, *, *CURRENT, *P
User name . . . . .                Name, *CURRENT, *ALL
Job number . . . . .                000000-999999, *ALL
Spool File Number . . . . . *LAST   1-9999, *ONLY, *LAST
Title for PDF Document . . . . . 'List of Presidents'

```

```

To PDF                               Display Spooled File
File . . . . . QSYSPT
Control . . . . .
Find . . . . .
*...+...1...+...2...+...3...+...4...+...5...+...6...+...7...+...8...+...
(TEMPLATES/RPT)                       Example Report

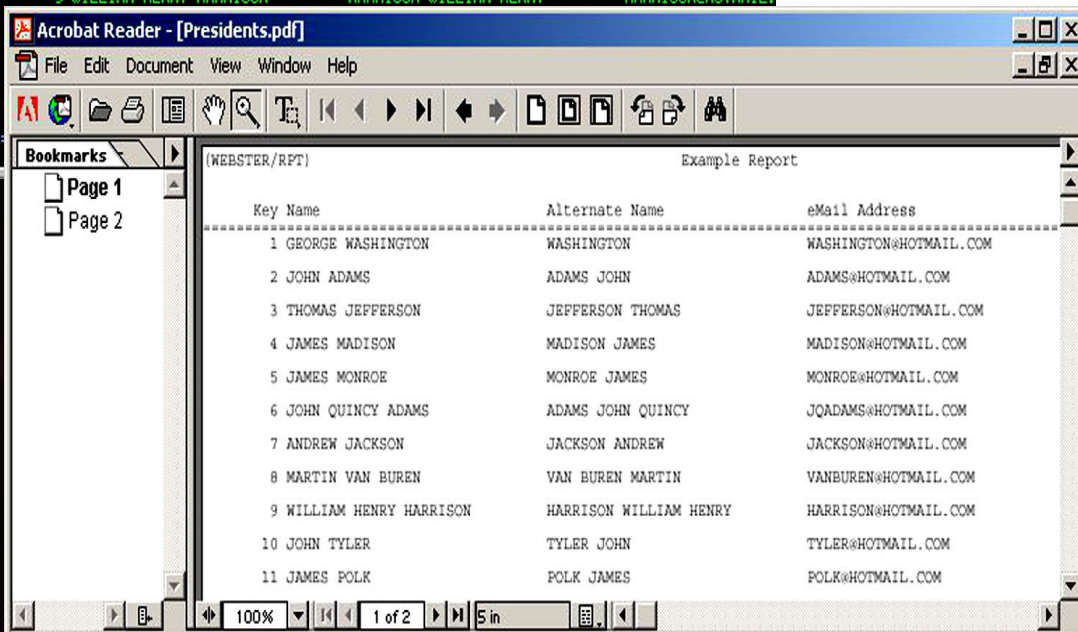
Key Name                               Alternate Name       eMail Address
-----
1 GEORGE WASHINGTON                    WASHINGTON           WASHINGTON@HOTMAIL.COM
2 JOHN ADAMS                           ADAMS JOHN           ADAMS@HOTMAIL.COM
3 THOMAS JEFFERSON                     JEFFERSON THOMAS    JEFFERSON@HOTMAIL.COM
4 JAMES MADISON                        MADISON JAMES       MADISON@HOTMAIL.COM
5 JAMES MONROE                         MONROE JAMES        MONROE@HOTMAIL.COM
6 JOHN QUINCY ADAMS                    ADAMS JOHN QUINCY   JOADAMS@HOTMAIL.COM
7 ANDREW JACKSON                       JACKSON ANDREW       JACKSON@HOTMAIL.COM
8 MARTIN VAN BUREN                     VAN BUREN MARTIN    VANBUREN@HOTMAIL.COM
9 WILLIAM HENRY HARRISON               HARRISON WILLIAM HENRY HARRISON@HOTMAIL.COM

```

Convert Spool File to PDF Documents (Splf2PDF) allows you to convert your simple* spooled output to a PDF file. The PDF document can then be emailed or viewed directly with Adobe Acrobat reader. The command can be executed from a command line or it can be embedded into your application for batch processing.

Splf2PDF is one of a number of unique utilities ProData has to offer. Geared towards programmer productivity tools, ProData has created innovative utilities to

support development within all industries for over 30 years. DBU, database utility, is the flagship product with more than 20,000 installations worldwide. Our other utilities, such as RDB Connect and SQL/Pro, continue to grow and fill the needs of new



and current customers with the evolution of technology and the Power Systems. ProData's been involved with IBM's Developers Roadmap, COMMON America Advisory Council, the IBM Advanced Business Partner program, and as an IBM Tools Partner.

*AFP, IPDS or graphic output not included



IBM i Software

ProData's software unleashes power with performance!

DBU

The 'original' database utility has moved beyond it's legacy. Now access IBM i data and **any data on any platform** through the same interface! Green-screen, GUI or WEB versions all under one umbrella. It just keeps getting better and better.

RDB Connect

Provides direct access to remote databases from all high-level languages on the IBM i. It enables record level I/O as well as the import/export of remote data for use in batch or interactive programs.

RDR

RDR retrieves deleted records instantly. It is the cheapest insurance you can buy. RDR retrieves those records you deleted in error. Retrieve all deleted records from any member of a physical file and RRN to RRN. The input file is not changed in any way. If all deleted records are not wanted, use the From and To Record to select the particular record(s).

SQL/Pro

Provides a cost effective structured query language with an extensive report formatter. It can save an organization time and money by reducing workloads and speeding up information retrieval. SQL/Pro is the powerful and affordable alternative to SQL/400 and custom report programming on the IBM i!

IBM i Utilities

ProData utilities include DBUnifier, CvtRPGIV, ProTools. DBUnifier creates database applications without coding! CvtRPGIV converts old RPG source to RPGIV. ProTools features eighteen system utilities with the source code included! RDR retrieves deleted records from any physical file.

"I have used ProData products for years. They provide quick, easy development tools and access to System i data which allows me to make decisions, improve process and increases productivity."

**Joan Steffes,
Omaha, NE**

Price List



prices starting at:

DBU

\$2495

LPAR version available for any number of partitions for an additional \$1995.

GUI One FREE single user license. Additional GUI licenses may be purchased for \$95 per concurrent seat.

DBU Audit - Record and report all adds, changes, deletes, reactivation of deleted records and the display of sensitive data using DBU. Price starts at \$995.

DBU RDB - Access cross-platform databases like MySQL, Oracle, Access, SQL Server and DB2. Priced at \$1995.

DBU Web - Access DBU through your web browser. Price \$995.

RDB Connect

\$2495

Integrate remote data into your applications. RDB Connect provides direct access to remote data from all high-level languages on the IBM i. Access MySQL, SQL Server, Oracle databases and more!

LPAR version available for any number of partitions for an additional \$1995.

RDR

\$695

RDR retrieves those records you deleted in error. Retrieve all deleted records from any member of a physical file. Retrieve deleted records from RRN to RRN.

SQL/Pro

\$1595

Can't find a cost effective SQL tool? Here it is! Select, organize and summarize your data the way you need to, quickly and efficiently.

LPAR version available for any number of partitions for an additional \$995.

Maintenance

Maintenance is just 15% of retail prices. The maintenance fee covers new releases, upgrades, technical support, customer portal support and more!

UTILITIES

DBUnifier - Unifies the ease of DBU Applications and the complexity of your development environment. \$1995

CvtRPGIV Package - Move to ILE! Convert old RPG source and utilize RPGIV templates. \$995
Includes Cozzi's RPGIV book FREE. (RPG templates available separately for \$595)

ProTools - Includes: Zip/unzip files, email directly from your IBM i and more! Eighteen utilities with source code for system integration. \$495



Some of our 15,000+ customers that use our utilities worldwide

Manufacturing

3M Pharmaceuticals
All American Bottling
Benjamin Moore
Bic Corporation
Cargill
Cambell Soup
Chanel Inc.
Chicago Powdered Metal
Dana Classic Fragrances
Diamond Crystal Brands
Goodyear Tire & Rubber
IBM Corp.
International Paper
Keebler Company
Motorola GIS
Old World Industries
Polar Corporation
Pepsi Cola Bottling
Tru Green Chemlawn
Turtle Wax Inc.

Public Administration

Alameda County Water
Baldwin County (AL)
Casino Control Commission
Central Utah Water
City of Columbia (MO)
City of Fairbanks (AK)
City of San Mateo (CA)
Des Moines General Hospital
Greenville County (SC)
Houston County Commission
Lake County Data Processing
Nebraska Department of Agriculture
Ohio Department of Commerce
Pennsylvania Housing Finance
Rochester Public Utilities (MN)
Sacramento County Medical System
State Bar of California
Transportation Research Center

Wholesale / Retail

Abbott Laboratories
Allegiance Healthcare
American Honda Motor Company
American Italian Pasta Group
American Steel & Aluminum
Anderson News Corp.
Avon
Bausch & Lomb
Bridgestone Firestone
Bumble Bee Seafood
Dollar Tree Stores
Duracell
Fuji Medical Systems
Kmart Corp.
Nabisco/Kraft foods
Sethness Greenleaf
Siemens
SYSCO Food Services
Toshiba America

Health Services

Associates in Anesthesia (RI)
Catholic Medical Center (NH)
Childrens Medical Center (OH)
Covenant Medical Center (IA)
Crittenton Hospital (MI)
East Alabama Medical Center
Eye Center of Florida
Good Samaritan Hospital (OH)
Grady Memorial (OH)
Group Health Cooperative (WI)
Kaiser Permanente (HI)
Mayo Foundation
New Brittan General (CT)
Oregon Medical Group
Queens Care (CA)
St. Francis Health System (KS)
St. Joseph Hospital (NH)
St. Jude Childrens Hospital (TN)
St. Vincent Medical Center (CT)
UMASS Memorial Healthcare (MA)

Apparel / Retail

Abercrombie & Fitch
American Eagle Outfitters
American Outpost LLC
Armani Exchange
Athlete's Foot
Casual Male Design, Inc.
Chico's Fashion Inc.
Children's Place
Christopher & Banks Corp.
Cintas
Claire's Stores
David's Bridal Inc.
Dunham's Sporting Goods
Fila USA Inc.
Lerner New York Inc.
Pacific Sunwear of California
Rainbow Apparel
Shopper's World
Urban Outfitters
Weekenders

Entertainment

Anderson Press
Arby's Inc.
Bally Total Fitness
Buena Vista Home Entertainment
Cleveland Indians
Cracker Barrel
Flamingo Hilton Las Vegas
Kansas City Chiefs
Las Vegas Hilton
Little Caesar Enterprises
McDonald's Corp.
New York Mets
New York Museum of Modern Art
Paramount Pictures Corp.
Red Robin International
Regis Corporation
Reno Hilton
Silverleaf Resort
Tropicana Hotel & Casino
Wafflehouse Inc.

Insurance / Banking

AAA Life Insurance Co.
AEGIS Insurance Services
Allied Administrators
Allstate Insurance Corp.
American Skadia Life Assurance
Aon Service Center
Bank of America
Blue Cross Blue Shield
Carco Group Inc.
Chase Manhattan Bank
Cigna
CitiBank
Family Health Partner
Federal Reserve Bank
GEICO
Massachusetts Public Employees
National Farmers Union Insurance
Van Kampen American Capital

Education

Arlington Independent School (TX)
Braille Institute of America
Charlottesville Public Schools (VA)
Columbia Public Schools (MO)
El Paso Community College
Fashion Institute of Design
Frederick County School District
Hillsboro School District (OR)
Kern High School District (CA)
Metropolitan Community College
NC State Education Assistance Authority
North Florida Community College
Olathe School District (KS)
Penn College of Technology
Pueblo Colorado School District
Sarasota County School District
Save the Children Federation
Stafford County Public Schools (VA)
United Way
University of Illinois