



# ProTools

## Popular Tools and the Source Code INCLUDED!

**File Based Menu System** Utilize a file based menu system that allows the creation and maintenance of menus. Access to menu options can be authorized by User or Group profile.

**Send E-Mail Message** Send Internet mail messages from green screens. This AS/400 command can be executed from a command line, submitted to batch or executed from a batch or interactive program.

**Zip/UnZip Files** Zip and UnZip Stream Files. Zip/Compress files which then can be opened using PKZIP or JAR. UnZip or uncompress files that have been zipped or compressed using PKZIP or JAR.

**Program File Cross Reference** Do you need to know all the programs that are using a certain file. This utility shows them all.

**Interrupt Job** Uses the system request function to break into interactive jobs and display the command entry screen.

**Nest CL** Nest CL conditional statements.

**Work With Group Jobs** Start/Stop and Manage Group Jobs. No longer do you have to log on to multiple devices and sessions. Use WRKGRPJOB and start, end and manage Group Jobs with this easy to use utility.

**Calculator** Use our Calculator/Adding Machine with an editable tape. Performs adding machine type functions and recalculates the results when you EDIT the TAPE. Print your results for a permanent copy.

**Scan Message File** Scan and filter messages containing specified phrases, words or partial words.

**Execute CL Source Member** Execute a CL source member without compilation. Create CL source members of multiple commands and job streams you desire to run, Then execute EXECLSRC to run them.

**Sort File** Quickly sort a file. Prompting allows you to select the fields and the order for the resulting sort.

**Create MI Program** Compiles source members written in MI.

**Display Member** Display source members on machines without IBM's Application Development Toolkit.

**Save/Restore Library List** Save your Library List into memory. Then restore the saved library list at any later point.

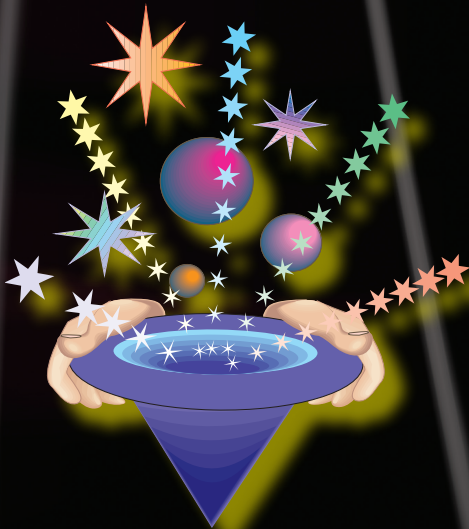
**Save/Restore Local Data Area** Save your Local Data Area into memory. Then restore the saved Local Data Area at any later point.

**Send User Break Message** Issue the USRBRKMSG command and a break message will be sent to each device the user profile is signed on to.

**View PC Document** View PC text documents in a folder on your AS/400 green screen.

**User Index Service Program** Create, delete and maintain User Indexes with ease. Use our service program to process user indexes. An example program is provided to show you how to use the USRIDX service program.

*We've had so many requests. Here, for the first time, is an opportunity to acquire some of the tools that we have developed over the years, and the source code is included!*



Share the Magic

800.228.6318

www.DoDBU.com