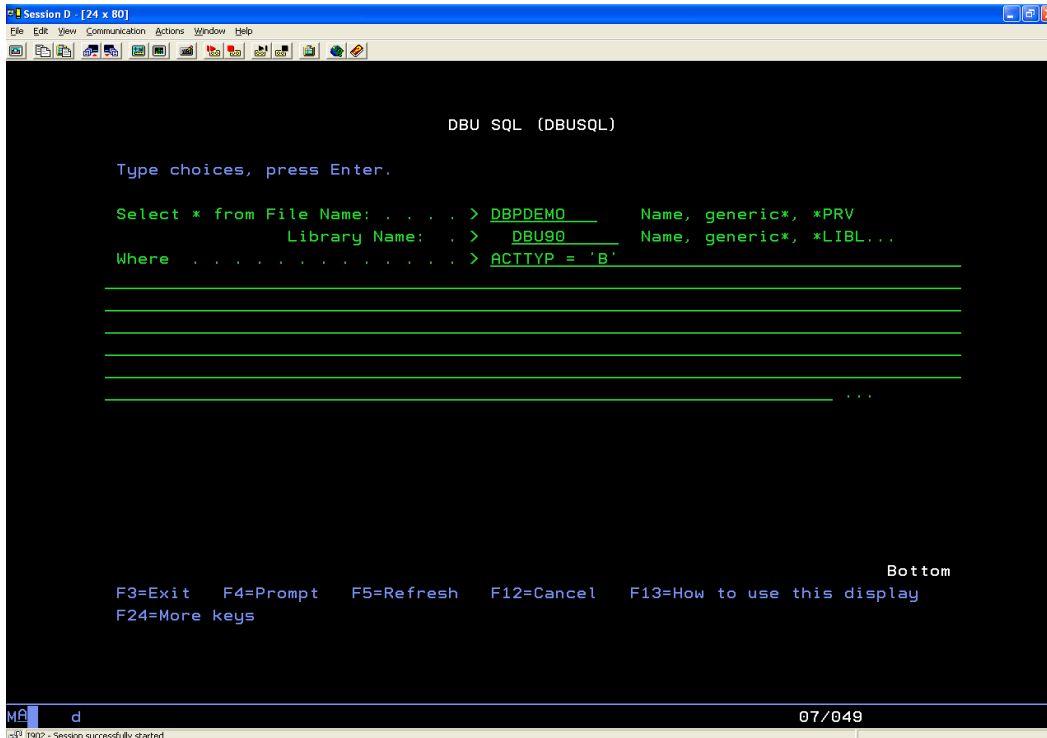


DBU 9.0 Enhancements

DBUSQL Command

This command will allow you to do a DBU search, using SQL syntax, without first opening a file in DBU. The results will be presented as a subset of data. For example, prompt the DBUSQL command and define a search:



```
DBU SQL (DBUSQL)

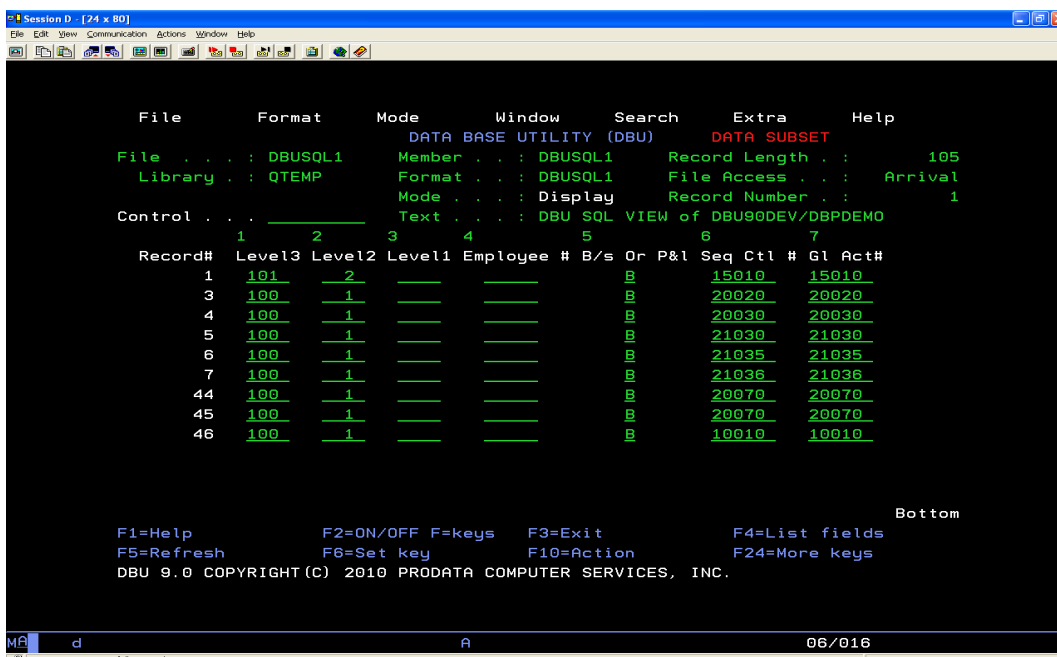
Type choices, press Enter.

Select * from File Name: . . . . > DBPDEMO      Name, generic*, *PRV
                               Library Name: . . > DBU90      Name, generic*, *LIBL...
Where . . . . . > ACTTYP = 'B'

Bottom

F3=Exit  F4=Prompt  F5=Refresh  F12=Cancel  F13=How to use this display
F24=More keys
```

Executing the command defined in the above screen will give results similar to the following:



```
File      Format      Mode      Window      Search      Extra      Help
DATA BASE UTILITY (DBU)      DATA SUBSET
File . . . : DBUSQL1      Member . . : DBUSQL1      Record Length . . : 105
Library . . : QTEMP      Format . . . : DBUSQL1      File Access . . . : Arrival
Control . . : _____      Mode . . . : Display      Record Number . . : 1
Text . . . : DBU SQL VIEW of DBU90DEV/DBPDEMO

  1      2      3      4      5      6      7
Record#  Level3  Level2  Level1  Employee #  B/s  Or P&l  Seq Ctl #  Gl Act#
  1      101      2      _____      _____      B      15010      15010
  3      100      1      _____      _____      B      20020      20020
  4      100      1      _____      _____      B      20030      20030
  5      100      1      _____      _____      B      21030      21030
  6      100      1      _____      _____      B      21035      21035
  7      100      1      _____      _____      B      21036      21036
 44      100      1      _____      _____      B      20070      20070
 45      100      1      _____      _____      B      20070      20070
 46      100      1      _____      _____      B      10010      10010

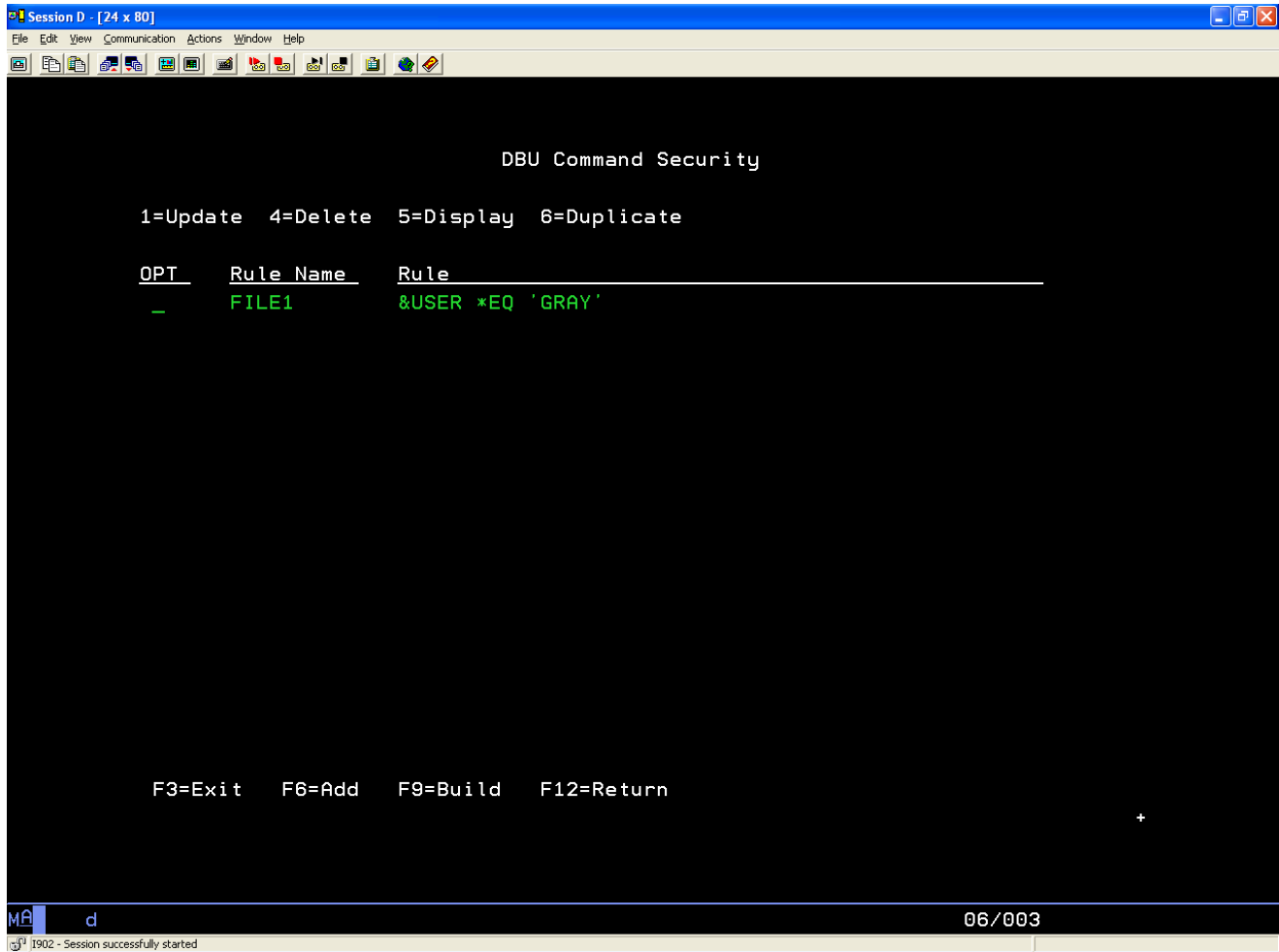
Bottom

F1=Help      F2=ON/OFF F=keys      F3=Exit      F4=List fields
F5=Refresh      F6=Set key      F10=Action      F24=More keys
DBU 9.0 COPYRIGHT (C) 2010 PRODATA COMPUTER SERVICES, INC.
```


DBUCMDSEC Command

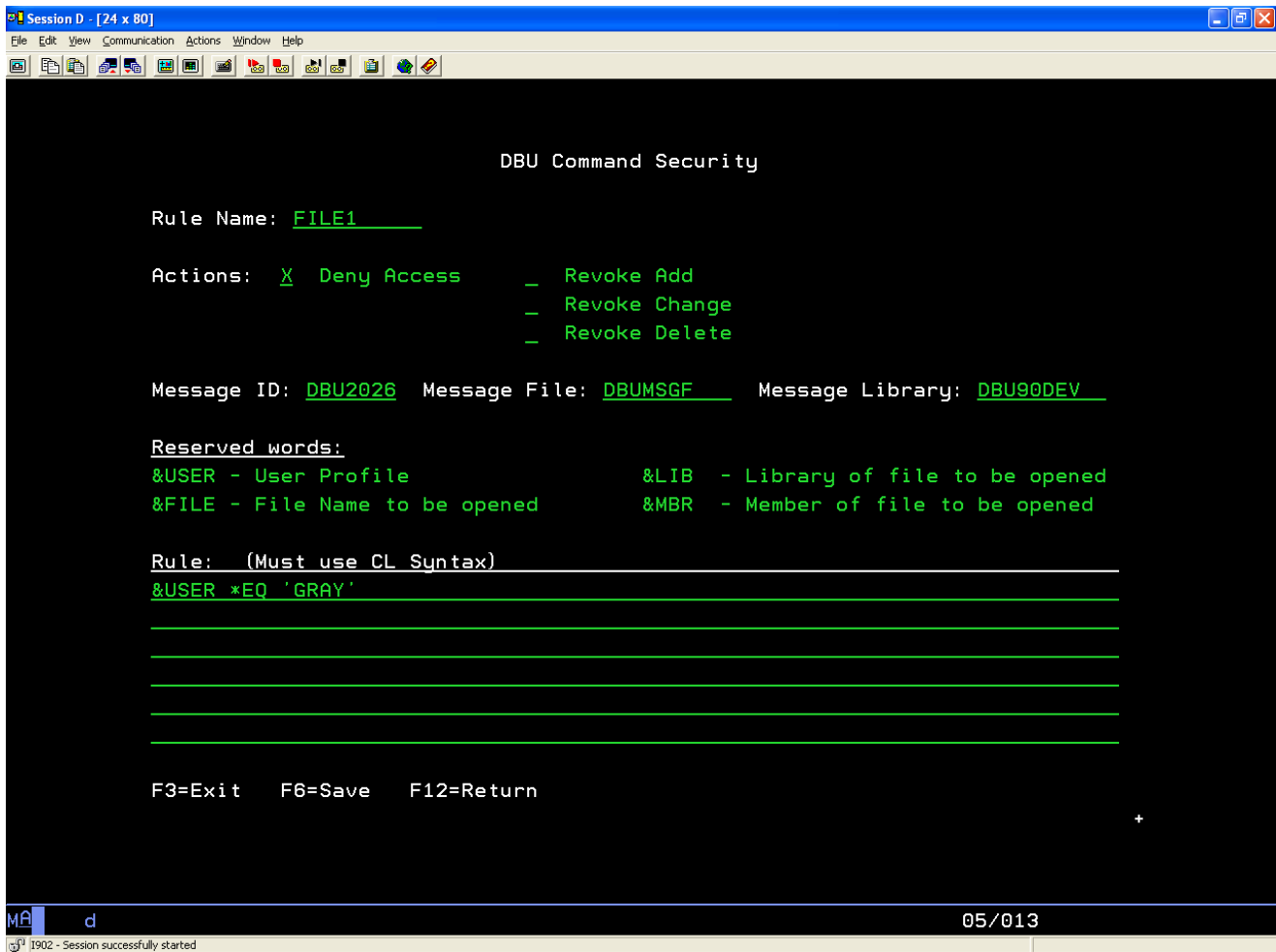
The user will need to understand Control Language (CL) syntax to get maximum utilization of this command. This new command gives the administrator enhanced control over what data users can access using DBU.

Executing the DBUSECCMD command will bring you to the DBU Command Security screen.



The screen above indicates that a rule (FILE1) has already been saved and built. Press F6 to add a new rule to the security program. Select option 1 to update rule FILE1.

In the following example, user Gray is denied access to the DBU command. When user Gray tries to use DBU, the message “Not authorized to use DBU” will be displayed.



DBUCMDSEC Functions

Rule Name... You can give the rule being created any name. In this case it is simply File1.

Actions... Deny Access will deny all access to what is defined under **Rule**. Add, Change or Delete can be individually revoked.

Message ID...

Message File...

Message Library... You can use system defined messages or create your own. In this example, a message from the DBU message file in the DBU library is being used.

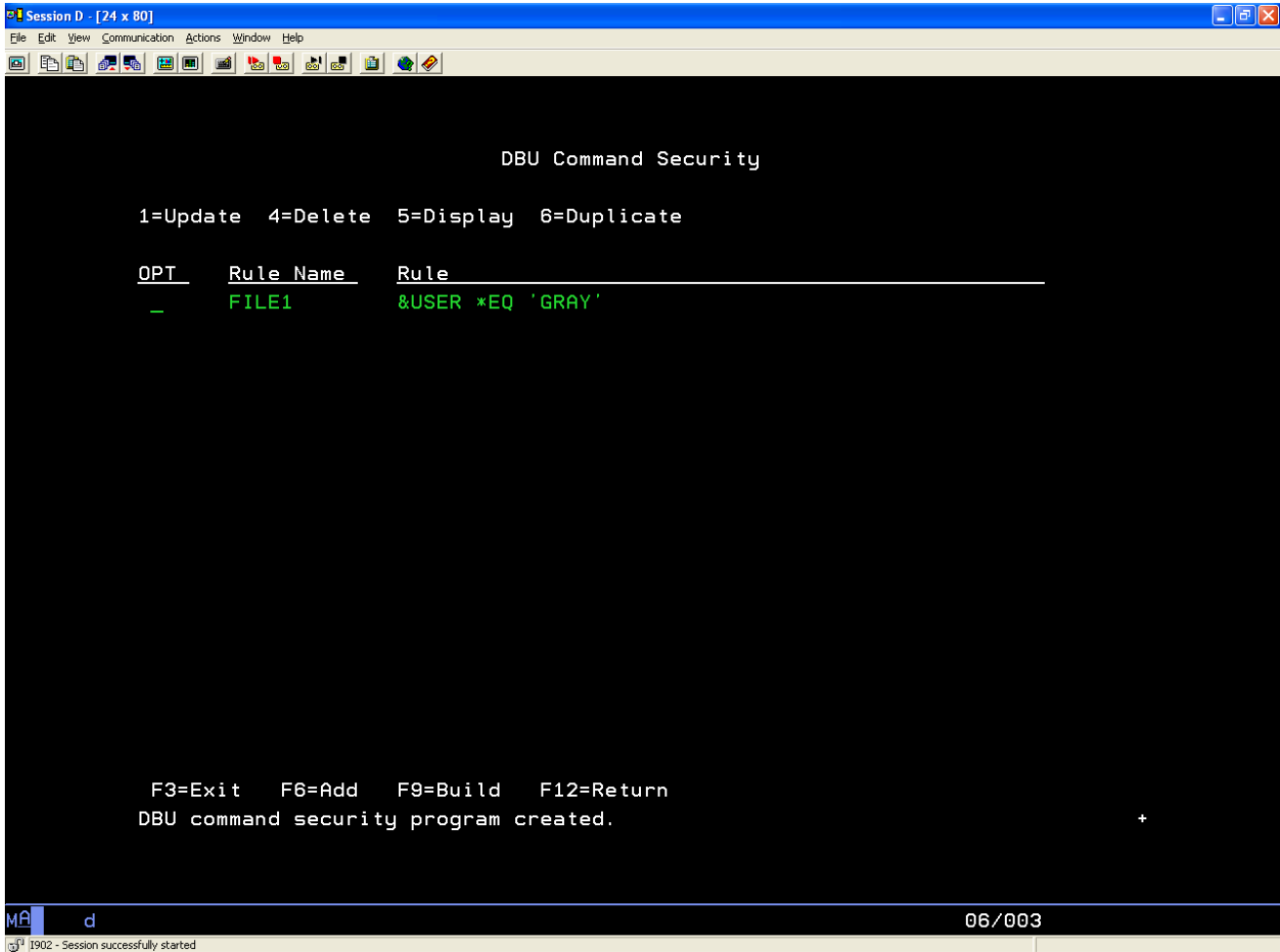
Reserved Words... Use the reserved words to help define to what/whom the Actions will be applied.

Rule... This is where you use a combination of the Reserved Words and CL syntax to define

exactly to what/whom the Actions will be applied.

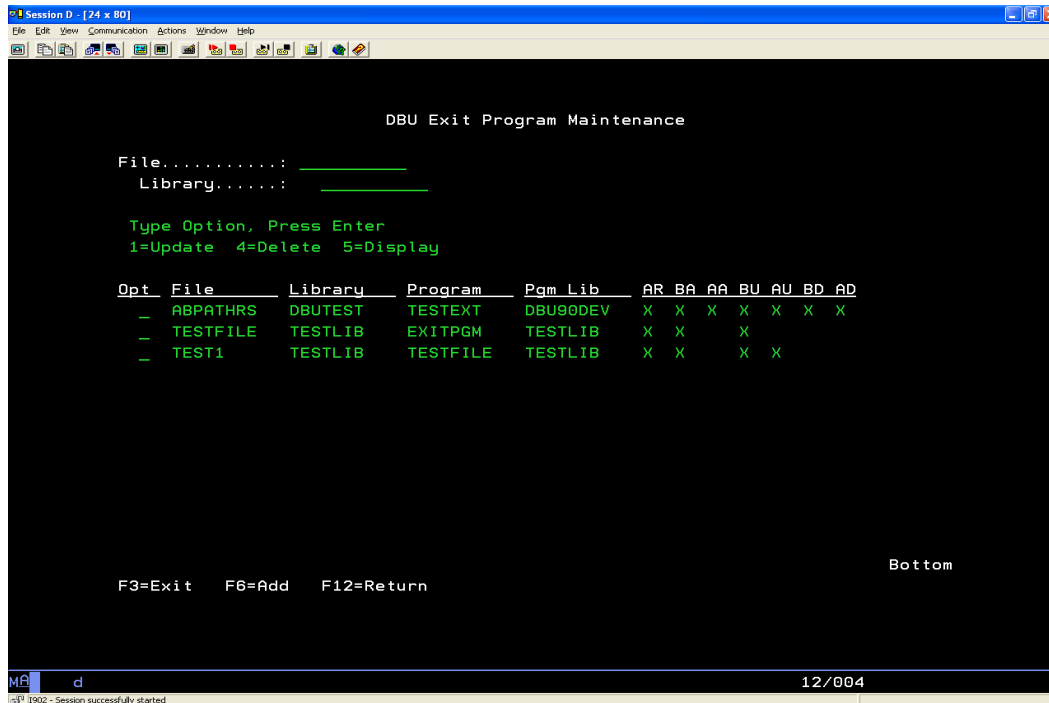
Press F6 to save your rule and return to the DBU Command Security screen.

Press F9 to build and apply the rule to the DBU command security program. Multiple rules can be applied to the program.



DBUEXTPGM Command

Now, exit programs can be set to execute when performing selected functions using DBU 9.0. Once an exit program has been created, a user can execute the DBUEXTPGM to get to the DBU Exit Program Maintenance screen. In the example below, three files have been defined to execute exit programs when using DBU.



```
Session D - [24 x 80]
File Edit View Communication Actions Window Help
DBU Exit Program Maintenance

File.....: _____
Library.....: _____

Type Option, Press Enter
1=Update 4=Delete 5=Display

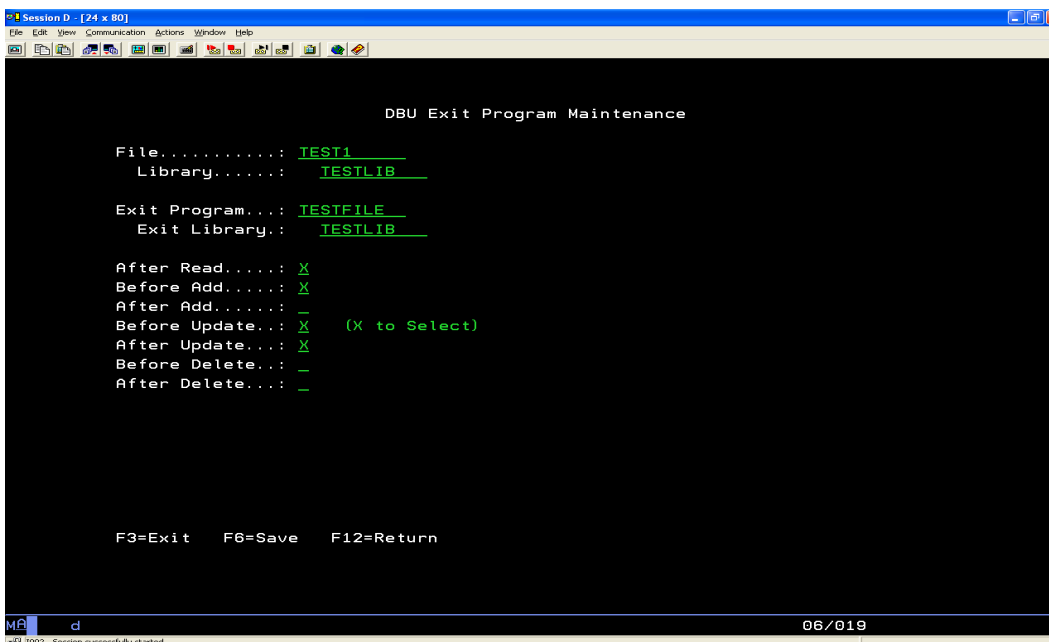
Opt File Library Program Pgm Lib AR BA AA BU AU BD AD
_ ABPATHRS DBUTEST TESTEXT DBU90DEV X X X X X X X
_ TESTFILE TESTLIB EXITPGM TESTLIB X X X
_ TEST1 TESTLIB TESTFILE TESTLIB X X X X

F3=Exit F6=Add F12=Return

Bottom

MA d 12/004
1902 - Session successfully started
```

Assume that in this example file TEST1 has a field that contains personal information (such as SSN) that is encrypted. Selecting option 1 allows the user to update DBU to define what exit program will be executed, and under which conditions.



```
Session D - [24 x 80]
File Edit View Communication Actions Window Help
DBU Exit Program Maintenance

File.....: TEST1
Library.....: TESTLIB

Exit Program...: TESTFILE
Exit Library..: TESTLIB

After Read....: X
Before Add....: X
After Add.....: -
Before Update..: X (X to Select)
After Update...: X
Before Delete..: -
After Delete...: -

F3=Exit F6=Save F12=Return

MA d 06/019
1902 - Session successfully started
```

Exit program TESTFILE will be executed for each of these selected operations:

- After a record in file TEST1 is read
- Before a record in file TEST1 is added
- Before a record in file TEST1 is updated
- After a record in file TEST1 is updated

Once all the desired operations have been selected, press F6 to save the setup and return to the first screen.