



ProData DBU RDi for IBM i
Quick Start Guide

Quick Start Guide

What is DBU RDi?

DBU RDi is a database utility accessible from within IBM Rational Developer for i (RDi) using the ProData DBU RDi plugin.

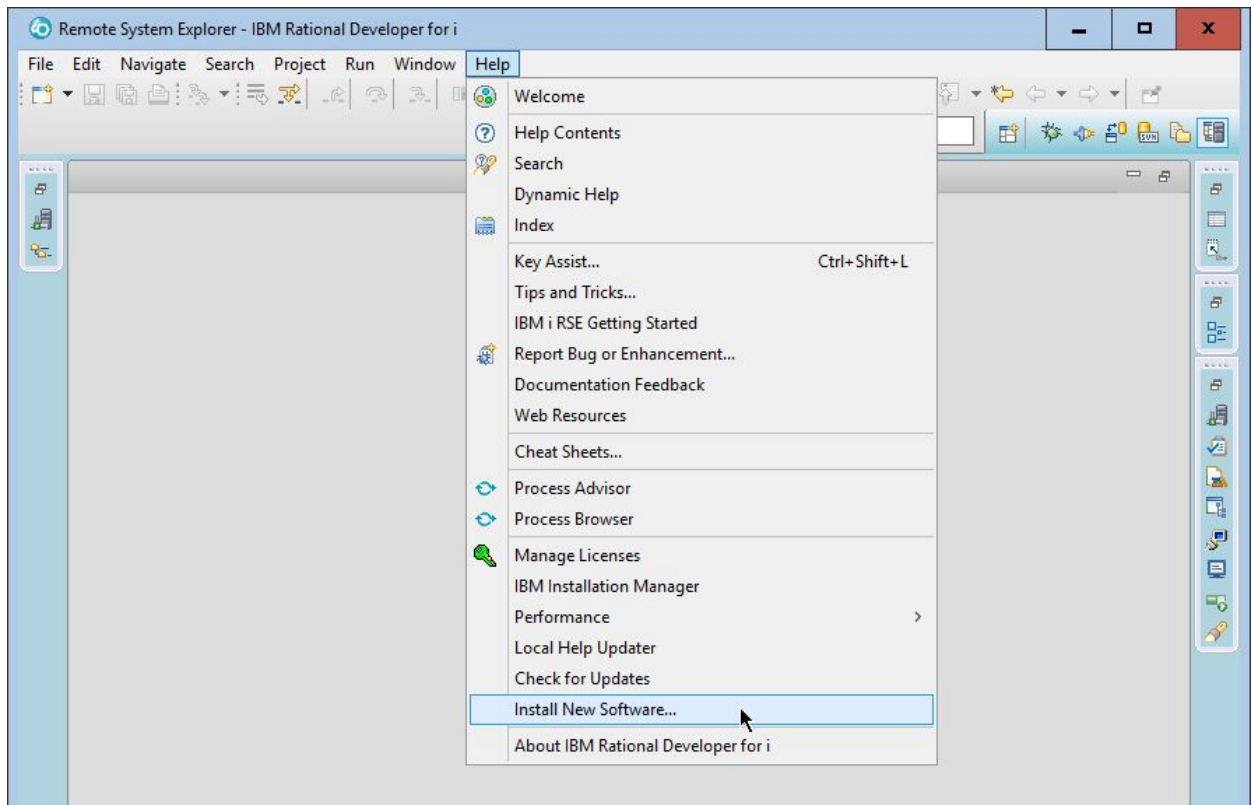
Install DBU RDi Plugin

This installation guide assumes that you have RDi installed on your computer, and that DBU RDi Server is already installed and running on a network-accessible computer. If this is not the case (or if you are unsure) please contact your internal tech support team, visit <http://www.dodbu.com/dbu-rdi>, or call ProData Customer Service for assistance.

DBU RDi Plugin

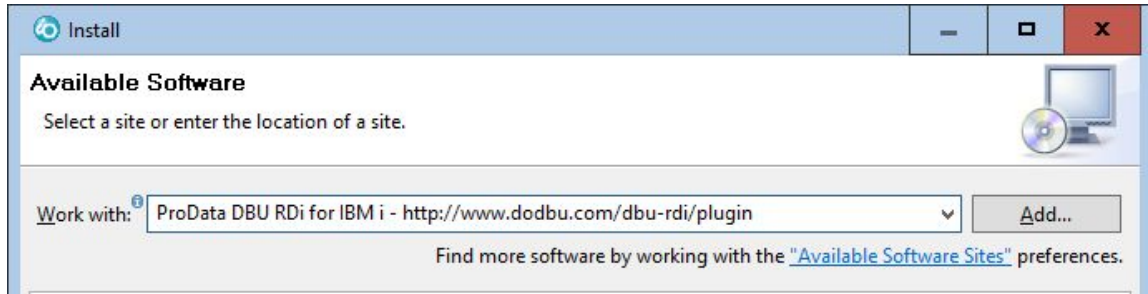
The DBU RDi Plugin is installed directly within RDi, which is where files can be opened with DBU.

1. Open RDi. From the menu bar, select **Help > Install New Software...**

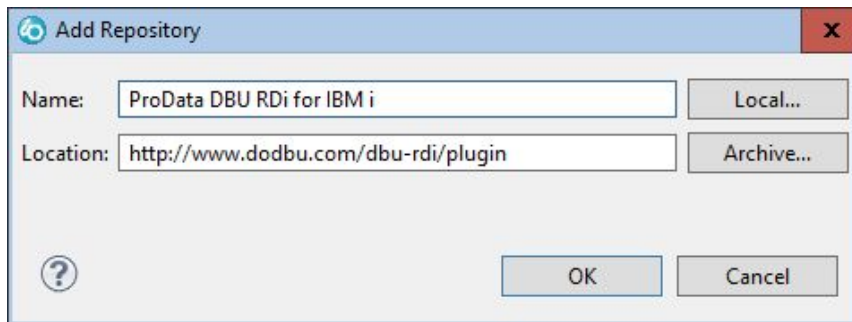


2. Enter the following into the **Work with:** field:

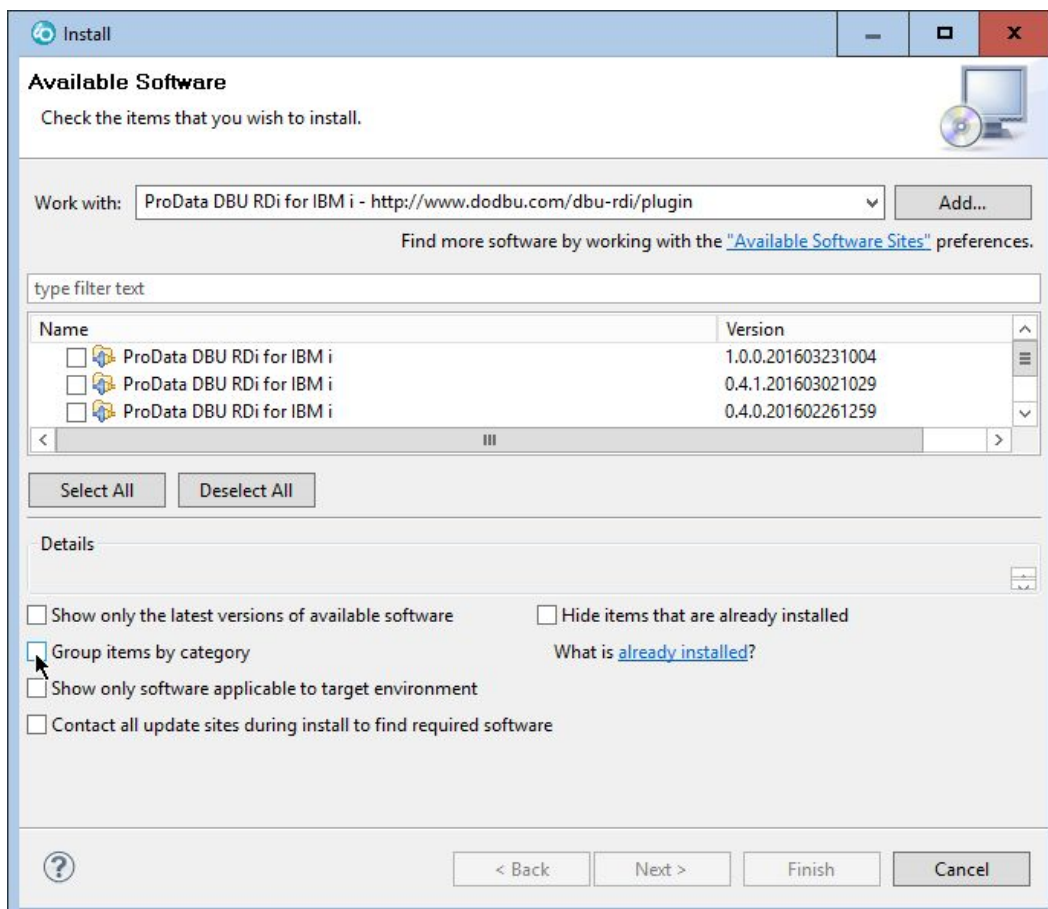
ProData DBU RDi for IBM i - <http://www.dodbu.com/dbu-rdi/plugin>



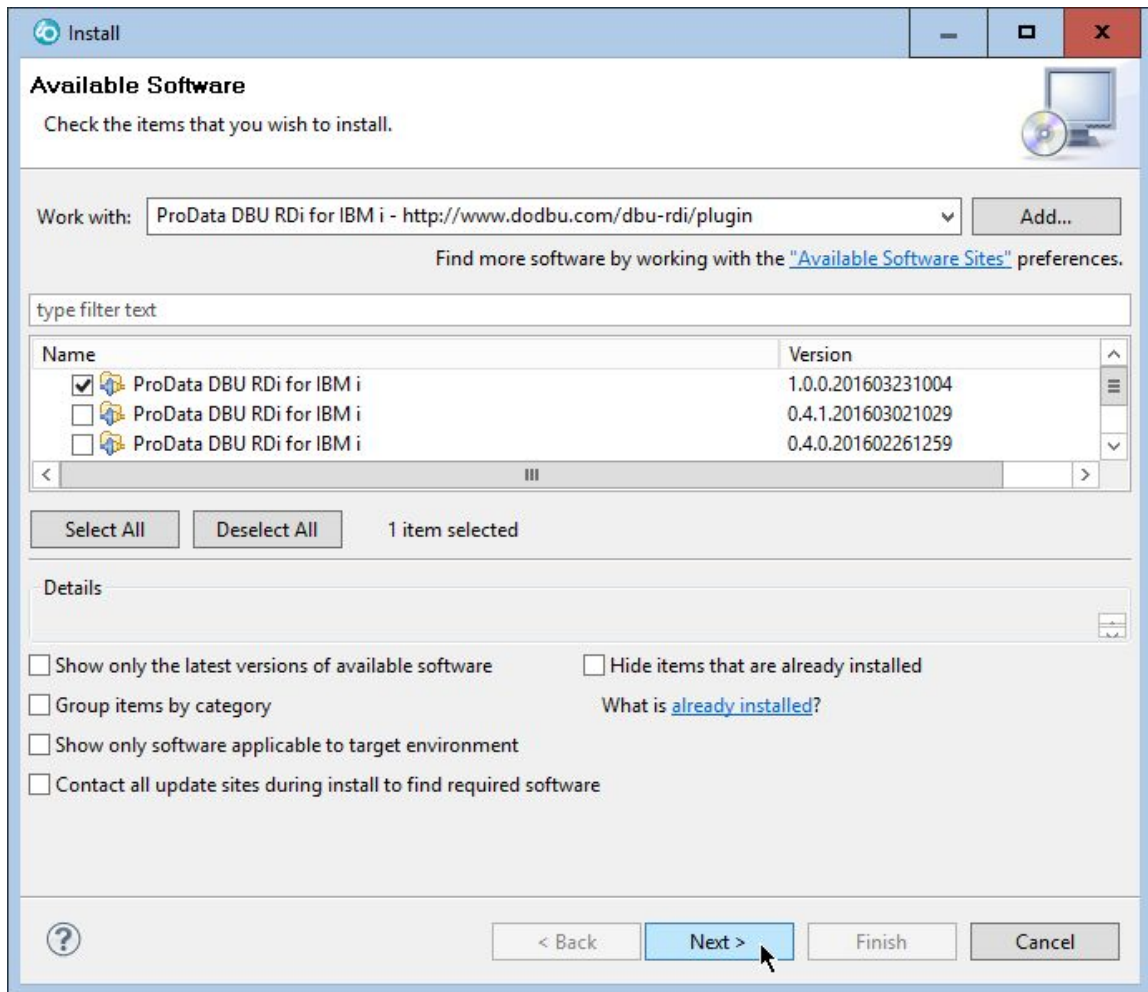
3. Click the **Add...** button and ensure the **Name:** and **Location:** fields contain the following values, then click **OK**.



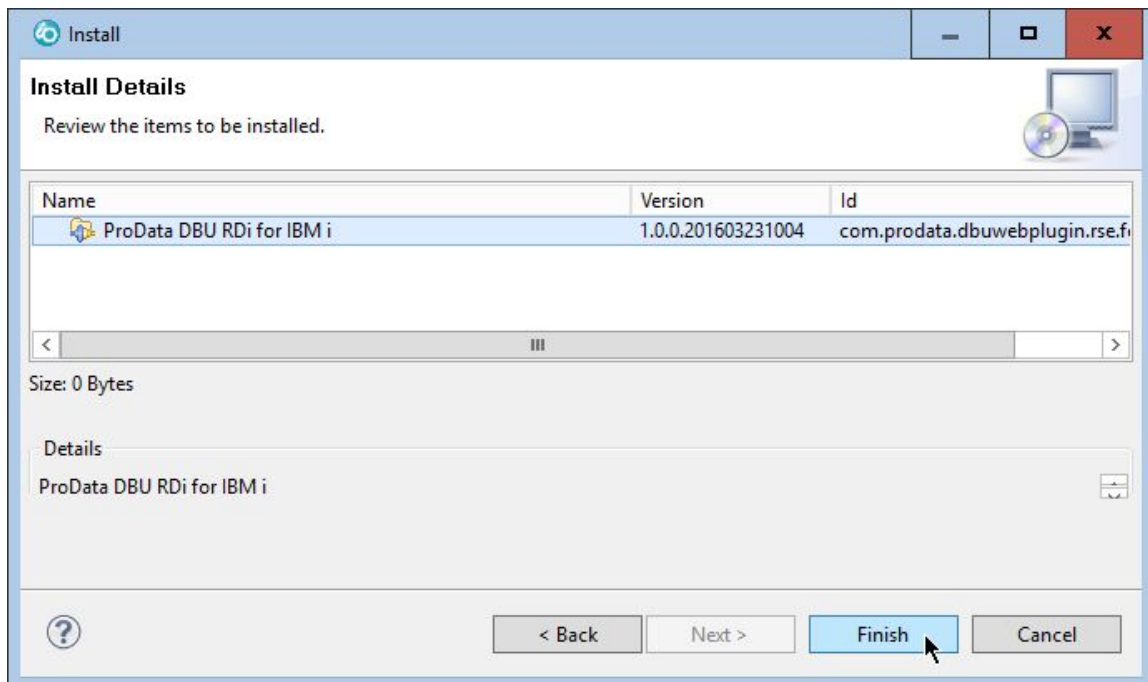
4. **IMPORTANT:** Ensure the **Group items by category** checkbox below the Details section is unchecked



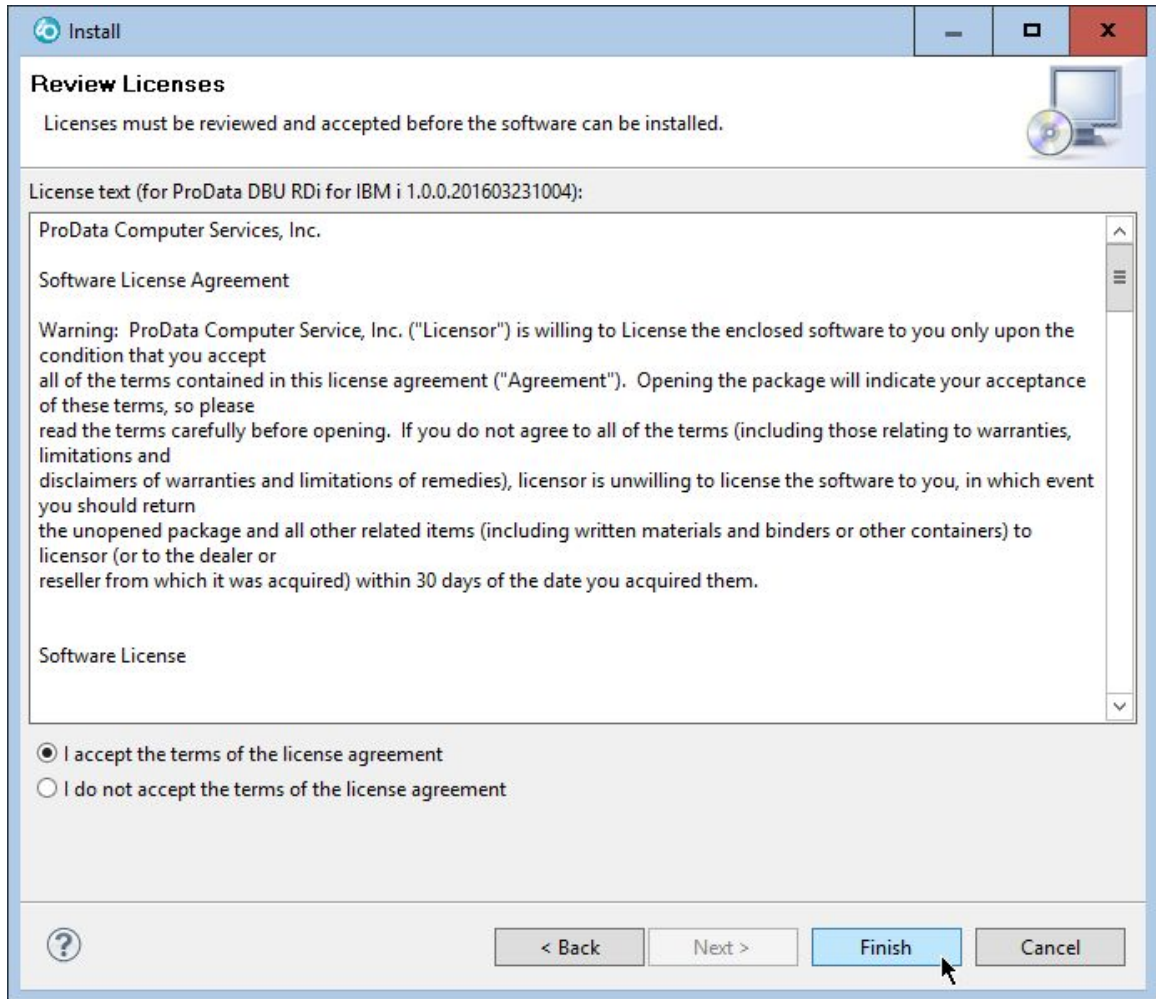
5. Select the checkbox next to the desired version of **ProData DBU RDi for IBM i** (typically the latest version, at top), then click **Next >**



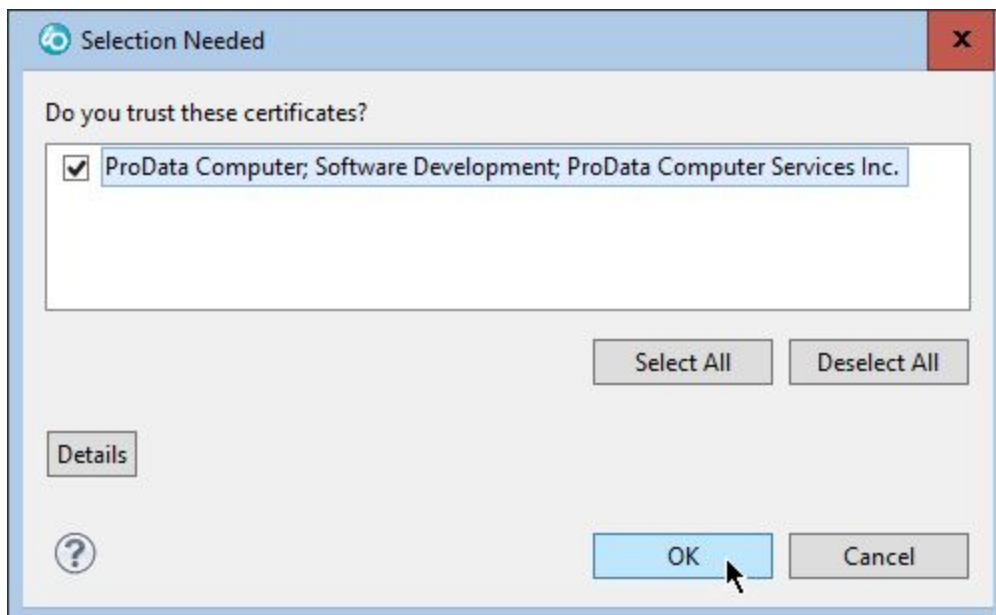
6. In the next window, select **ProData DBU RDi for IBM i**, then click **Finish**



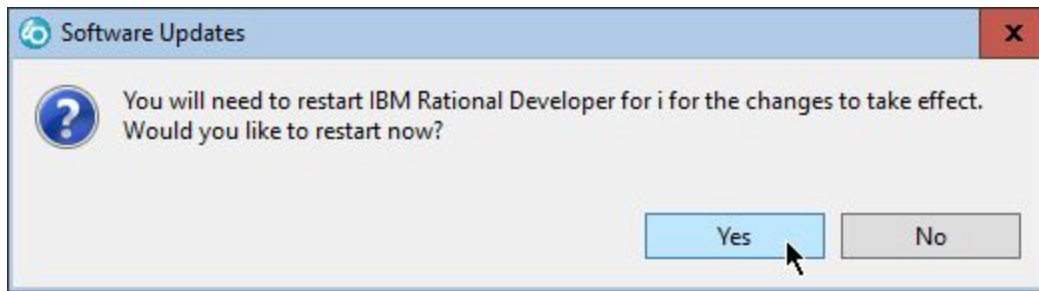
7. Accept the Software License Agreement, then click **Finish**



8. The final step is to authorize trust of the ProData certificates by checking the available checkbox, then click **OK**



9. After a few moments the installation process will be complete and a prompt to restart RDi is displayed - click **OK**



When RDi opens again, you're ready to launch! Move ahead to the **Launch the App** section.

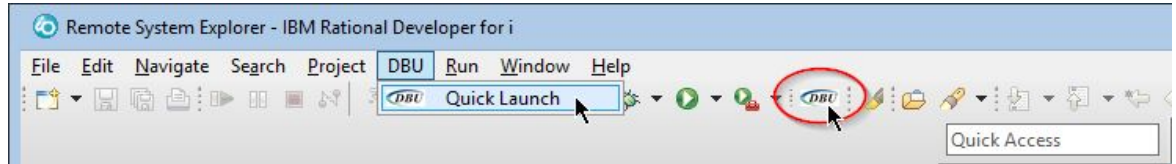
Launch the App

Objects are opened with DBU using one of the following methods:

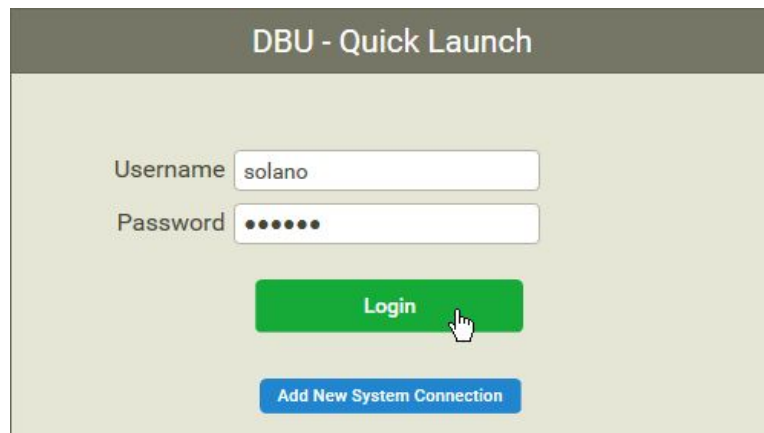
Quick Launch

This option allows you to specify an object directly, rather than navigating through the RSE tree.

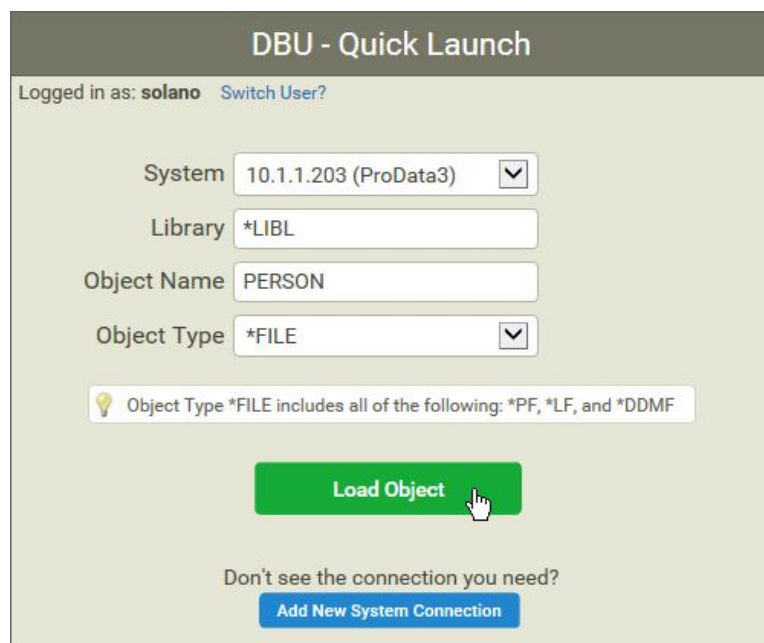
1. In the menu bar, go to **DBU > Quick Launch**, or click the  icon in the toolbar.



2. Upon activating Quick Launch, you must authenticate your user (if not already done):
 - a. Enter your username/password and **Login**, or create a new system connection if none were found (the app will notify you if this is the case)

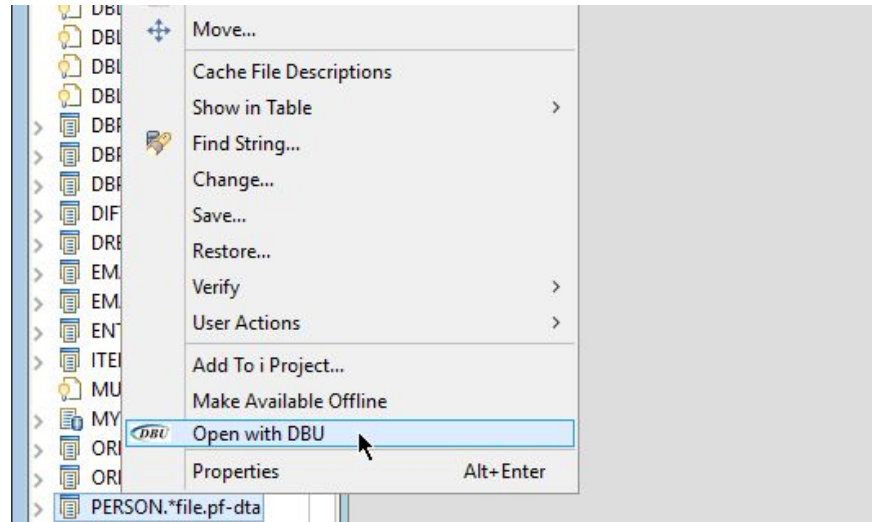


- b. Choose the desired System and specify a Library (default is *LIBL), Object Name, and Object Type. Once finished, click **Load Object** and you're on your way!



RSE (Remote System Explorer)

Navigate to the desired object in RSE, then right-click and select **Open with DBU**

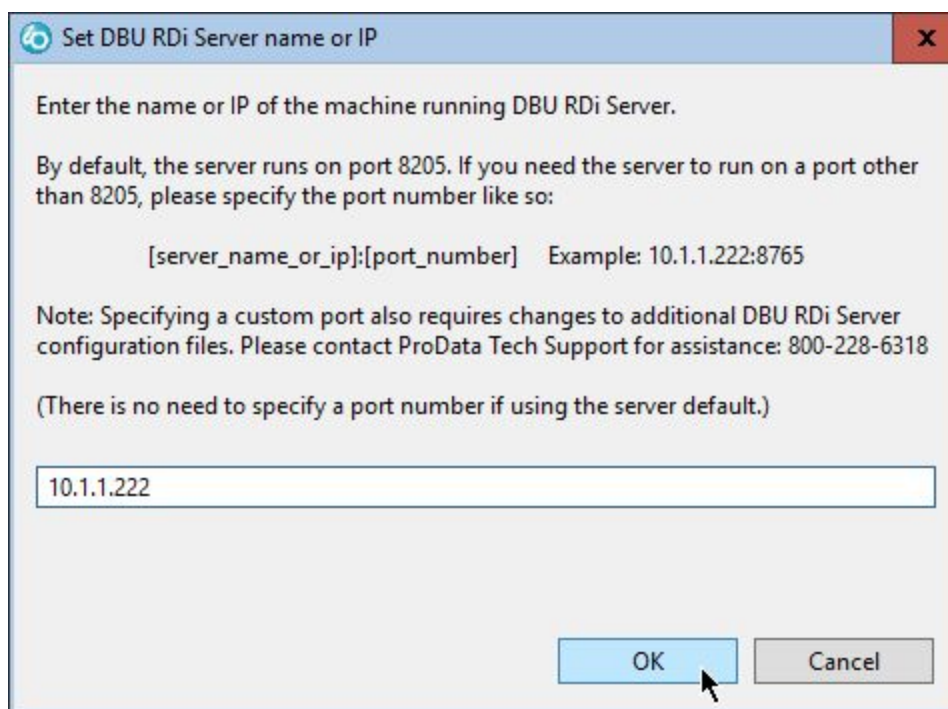


Set the DBU RDi Server Name/IP

The first time DBU RDi is launched (or any time a DBU RDi server connection cannot be established), you will be prompted to provide the name/IP of the machine running DBU RDi Server. When this occurs, enter the appropriate name/IP and click **OK**.

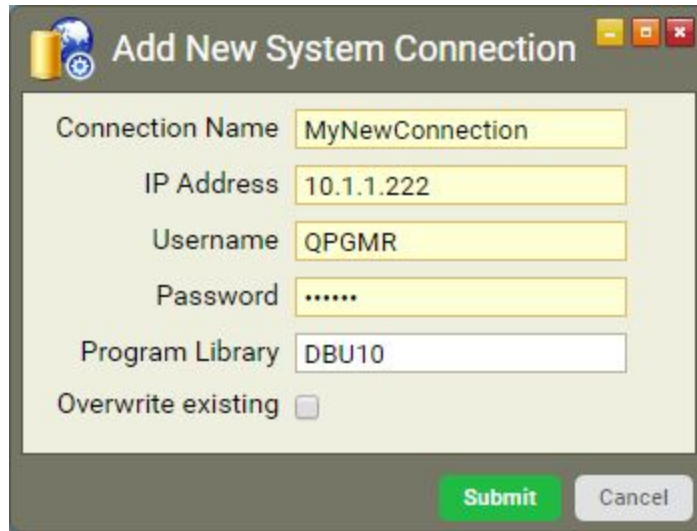
Note: The default server port is 8205. If you need the server to run on a different port, you must specify that port number along with the server name/IP (see example below). Visit the following link for details on configuring your DBU RDi server to run on a custom port:

<http://www.dodbu.com/dbu-rdi/docs/DBURDi-ServerPluginPortCustomization.pdf>



Create a New System Connection

When a new RSE system connection is used for the first time, you will be prompted to provide credentials for that connection. Complete all fields and click the **Submit** button (this will only be required once per system connection)



Add New System Connection

Connection Name: MyNewConnection

IP Address: 10.1.1.222

Username: QPGMR

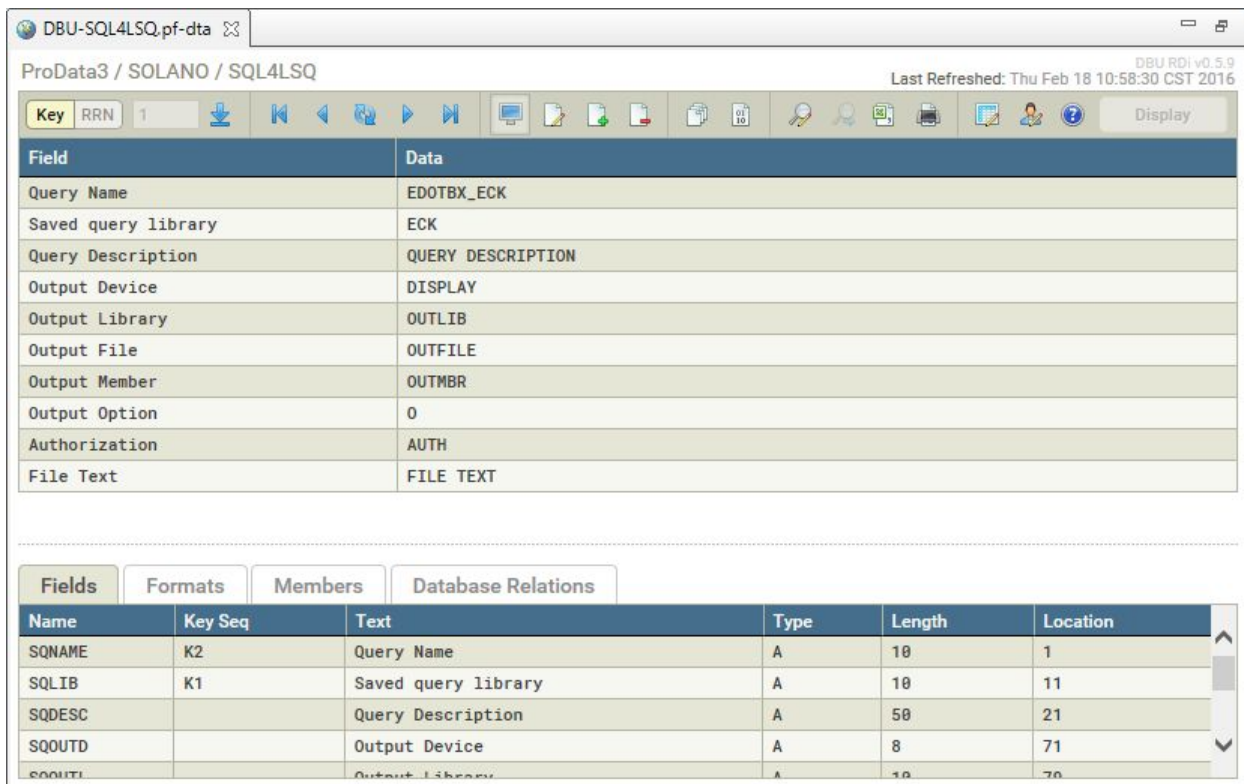
Password:

Program Library: DBU10

Overwrite existing:

Submit **Cancel**

After the new system has been added, the requested file will display in a new browser tab.



DBU-SQL4LSQ.pf-dta

ProData3 / SOLANO / SQL4LSQ

DBU RDI v0.5.9
Last Refreshed: Thu Feb 18 10:58:30 CST 2016

Field	Data
Query Name	EDOTBX_ECK
Saved query library	ECK
Query Description	QUERY DESCRIPTION
Output Device	DISPLAY
Output Library	OUTLIB
Output File	OUTFILE
Output Member	OUTMBR
Output Option	0
Authorization	AUTH
File Text	FILE TEXT

Fields | Formats | Members | Database Relations

Name	Key Seq	Text	Type	Length	Location
SQNAME	K2	Query Name	A	10	1
SQLIB	K1	Saved query library	A	10	11
SQDESC		Query Description	A	50	21
SQOUTD		Output Device	A	8	71
SQOUTL		Output Library	A	10	70

Do DBU!

At this point you have everything you need to begin using DBU RDi.

If this is your first time using DBU RDi, or if it's been a while, we encourage you to read through the User Manual's **Exploring the Interface** section to familiarize yourself with the basics.

If you'd like to dig a little deeper into the underlying functionality of DBU RDi, check out the **Functional Reference** near the end of the User Manual. Of course, you're always welcome to contact us if you have questions or need assistance:

ProData Customer Support

Online: <http://www.dodbu.com/support.shtml>
Toll Free: 800.228.6318
Fax: 402.697.7576