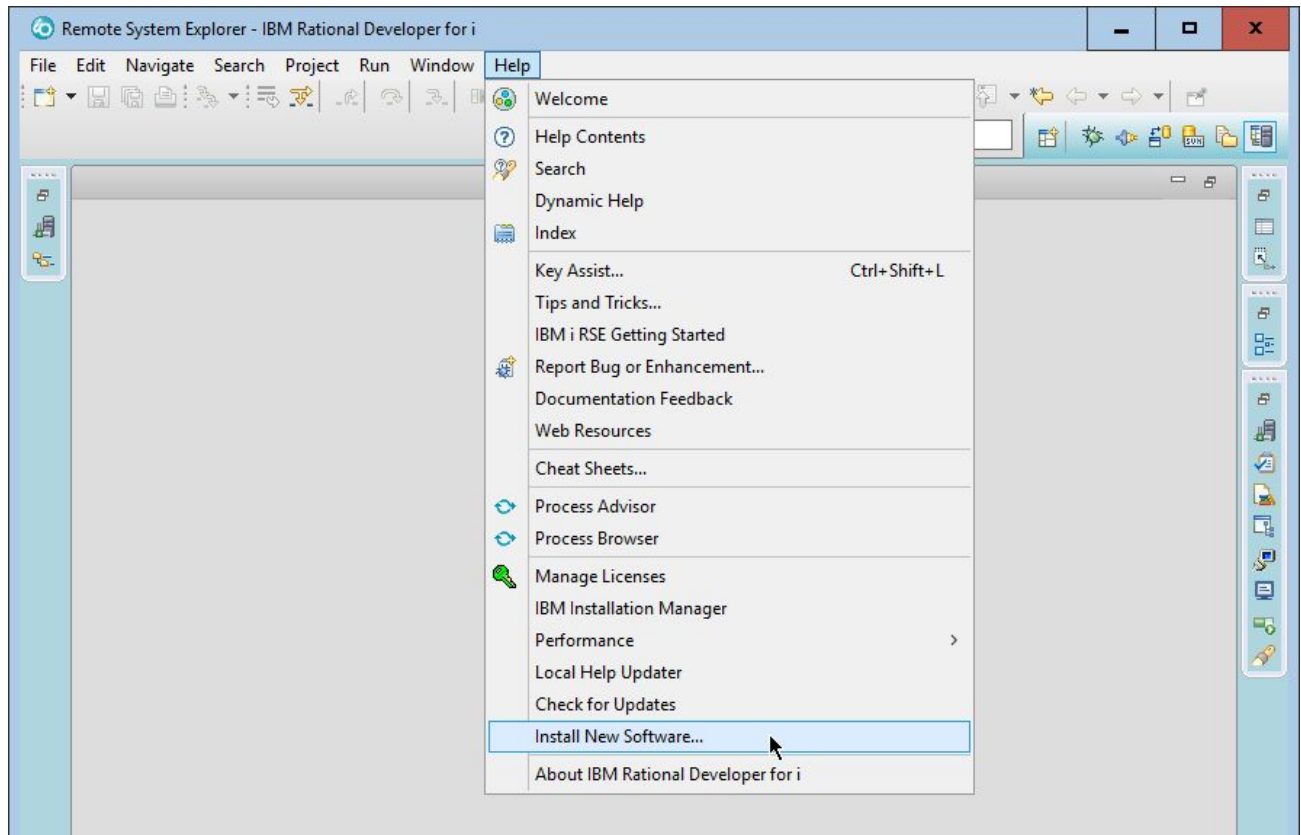


DBU RDi - Tech Support

Installation

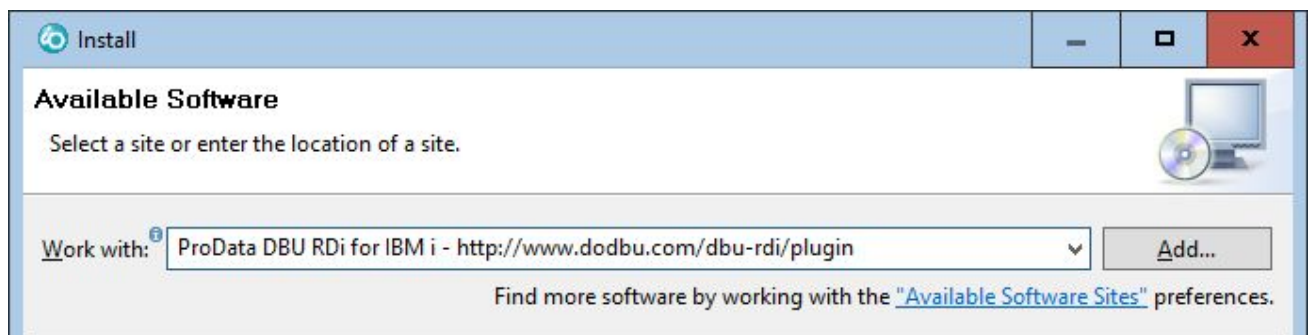
RDi Plugin

1. Open RDi
2. From the menu bar, select **Help > Install New Software...**

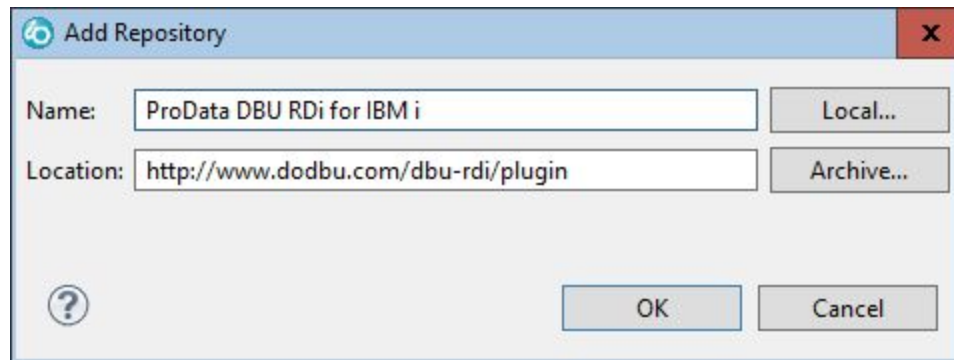


3. Enter the following into the **Work with:** field:

ProData DBU RDi for IBM i - <http://www.dodbu.com/dbu-rdi/plugin>

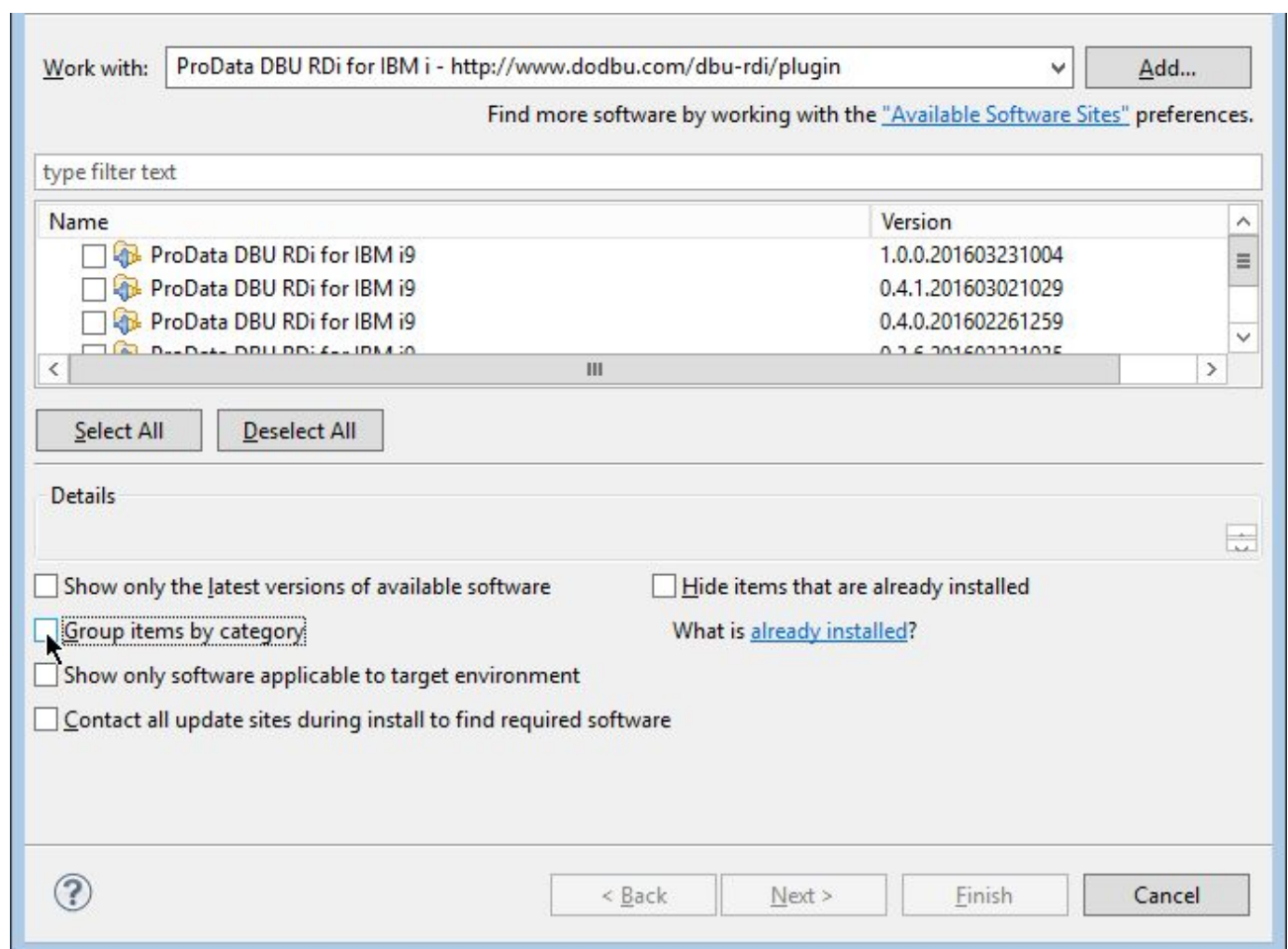


- Click the **Add...** button and ensure the **Name:** and **Location:** fields contain the following values:



The 'Add Repository' dialog box has a title bar with a question mark icon and a close button. It contains two input fields: 'Name' with the text 'ProData DBU RDi for IBM i' and a 'Local...' button to its right; and 'Location' with the text 'http://www.dodbu.com/dbu-rdi/plugin' and an 'Archive...' button to its right. At the bottom are 'OK' and 'Cancel' buttons, and a help icon on the left.

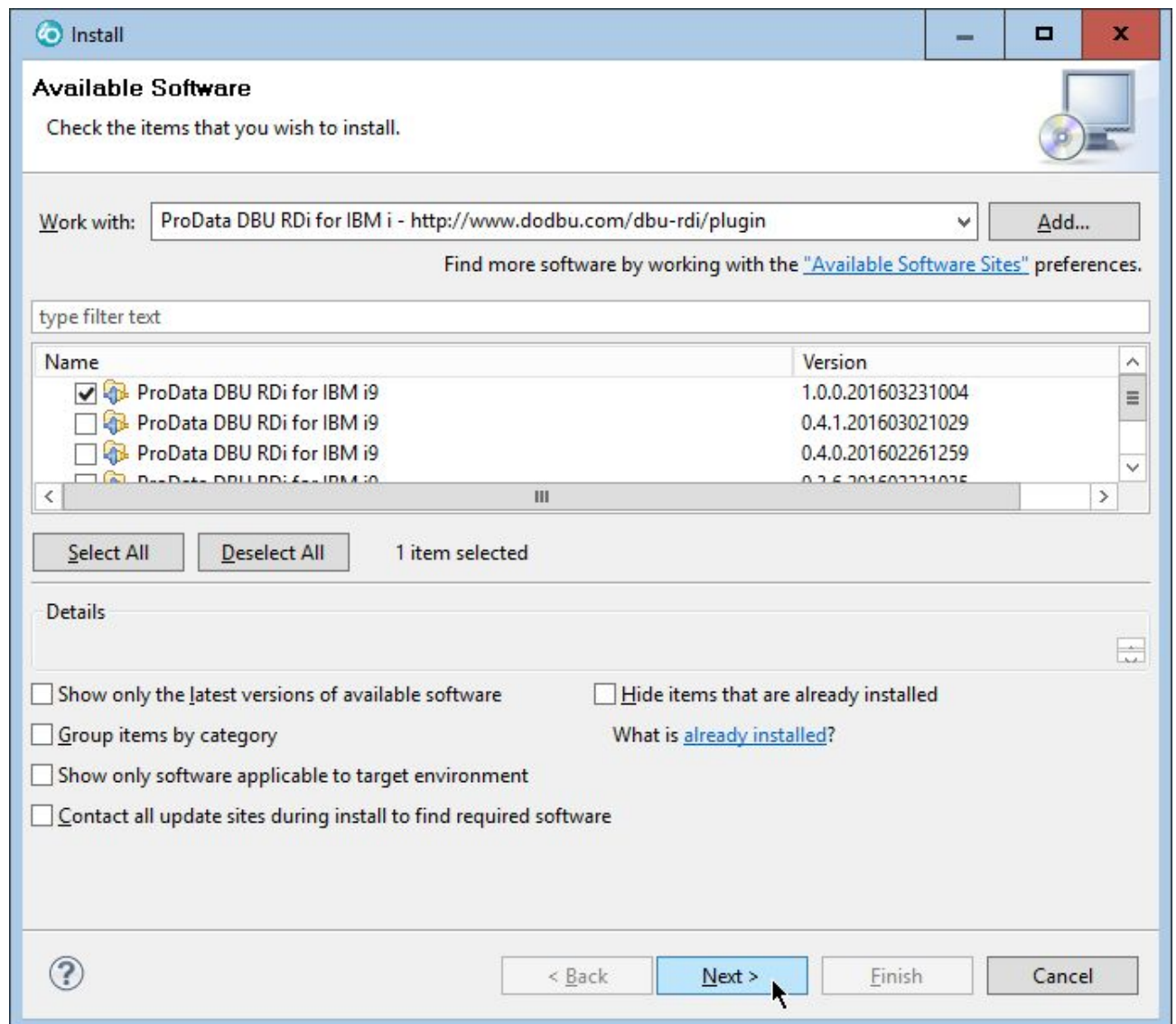
- Click **OK**
- IMPORTANT:** Ensure the **Group items by category** checkbox below the Details section is unchecked



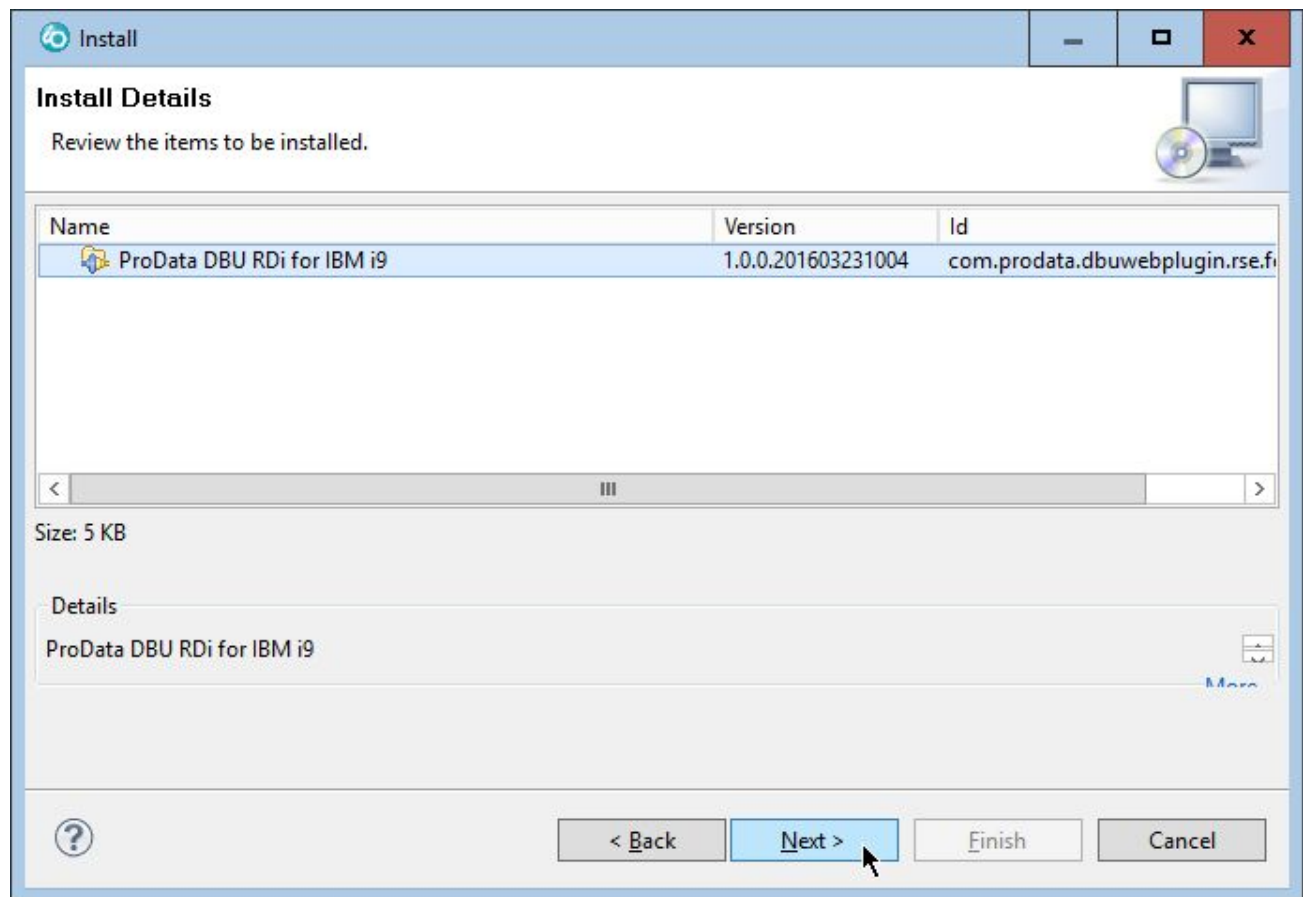
The software selection window shows the repository 'ProData DBU RDi for IBM i' selected in the 'Work with:' dropdown. Below this is a table of software items with columns 'Name' and 'Version'. The table lists four entries for 'ProData DBU RDi for IBM i' with different version numbers. Below the table are 'Select All' and 'Deselect All' buttons. The 'Details' section contains several checkboxes: 'Show only the latest versions of available software', 'Hide items that are already installed', 'Group items by category' (which is checked and highlighted with a red box and a mouse cursor), 'Show only software applicable to target environment', and 'Contact all update sites during install to find required software'. At the bottom are navigation buttons: '< Back', 'Next >', 'Finish', and 'Cancel'.

Name	Version
ProData DBU RDi for IBM i	1.0.0.201603231004
ProData DBU RDi for IBM i	0.4.1.201603021029
ProData DBU RDi for IBM i	0.4.0.201602261259
ProData DBU RDi for IBM i	0.3.6.201603231025

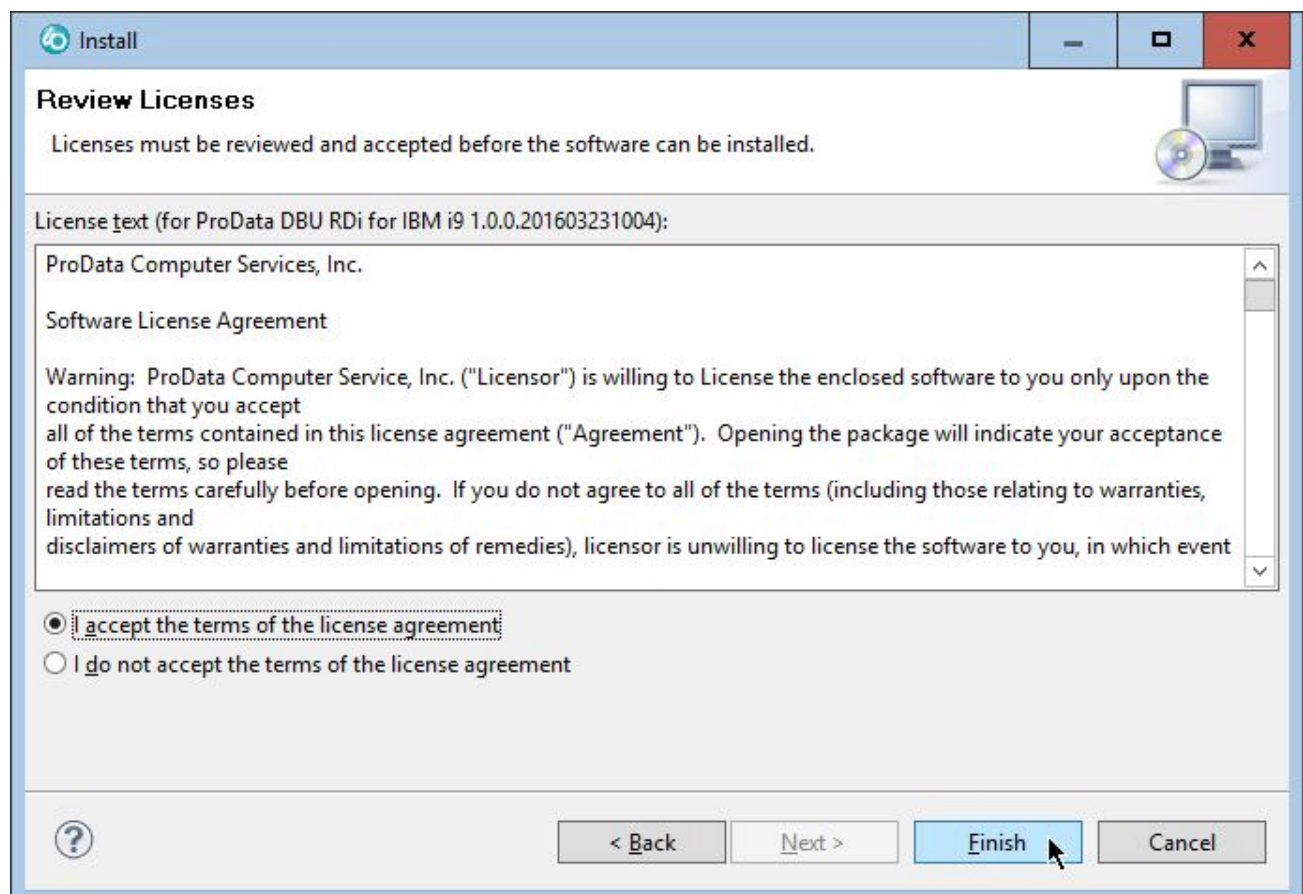
7. Select the checkbox next to the desired version (usually latest, at top) of **ProData DBU RDi for IBM i**⁹, then click **Next >**



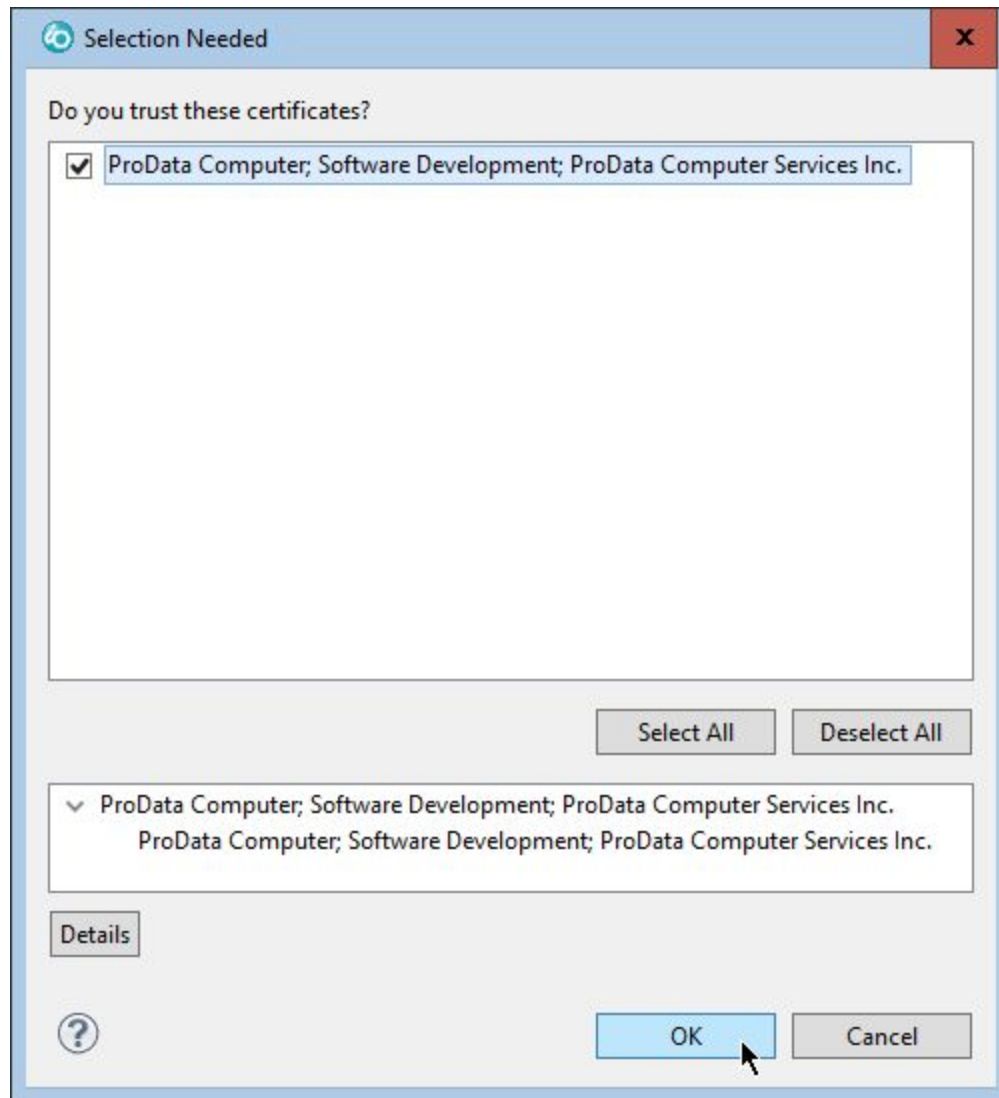
8. In the next window, select **ProData DBU RDi for IBM i**[9], then click **Next >**



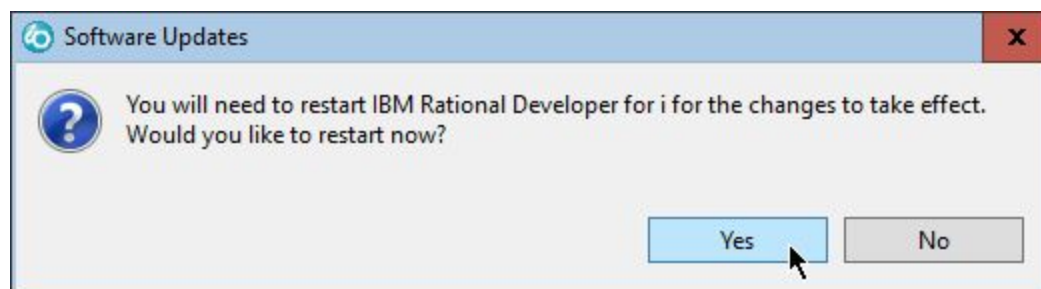
9. Accept the Software License Agreement, then click **Finish**



10. The final step is to authorize trust of the ProData certificates by checking the available checkbox, then click **OK**



11. After a few moments the installation process will be complete and a prompt to restart RDi is displayed - click **OK**



12. When RDi opens again, right-click on an object within Remote System Explorer and select **Open with DBU**

